

CHRONICLES

NEWS AND INFORMATION FOR ALL ONBOARD EVENTS

SUNDAY, 3 MARCH 2024

CAIRNS, AUSTRALIA
All Aboard: 9:30PM
Departure: 10:00PM

DRESS CODE: CASUAL

For Ladies: DRESSES OR BLOUSES AND PANTS
For Gentlemen: SPORT SHIRTS AND SLACKS
No shorts or flip flop type footwear after 6:00PM
in indoor venues

TODAY'S WEATHER

Overcast / Chance of Rain
High: 86°F 30°C
Low: 79°F 26°C



CAIRNS, AUSTRALIA

Aboard Silver Shadow

PLAN AHEAD

Upcoming ports



DAY	PORT	ARRIVE	DEPART
3 Mar	Cairns, Australia	Overnight	10:00pm
4 Mar	Day at Sea	-	-
5 Mar	Day at Sea	-	-

YOUR EXPERIENCES ASHORE

CAIRNS, AUSTRALIA LAST SPACES AVAILABLE - BOOK TODAY!

Don't miss the chance to make the most of your time ashore. We still have spaces available for the following tours:

CNS-S - ABORIGINAL RAINFOREST JOURNEY 5 Hours | \$119 Activity Level Moderate

Explore the Aboriginal culture amidst the pristine natural beauty of the Rainforestation Nature Park during this captivating, half-day sightseeing excursion.

CNS-K - GREAT BARRIER REEF ADVENTURE 8¾ Hours | \$399 Activity Level Extensive

Experience one of the great natural wonders of the world and an UNESCO World Heritage Site all-in-one during this panoramic, full-day catamaran excursion to the Great Barrier Reef.

A short walk from the dockside will take you to your luxury fast catamaran and awaiting crew. This journey is unique, as the vessel will anchor at a mooring on the outer reef for your enjoyment alone.

DECK 5 EXT. 858
OPENING HOURS:
7:30AM - 10:30AM | 4:00PM - 7:00PM



CAIRNS, AUSTRALIA

VISIT AUSTRALIA'S MOST ICONIC AND MUCH-LOVED SPECIES - THE KOALA

Embark on an unforgettable wildlife adventure in the heart of the renowned Kuranda rainforest village, a 40-minute drive northwest from Cairns. You can also reach the gardens by Skyrail or the Kuranda Railway.

Kuranda Koala Gardens is home to many of Australia's iconic animals including wallabies, wombats, snakes and lizards, gliders, Australia's freshwater crocodiles and of course - koalas!

Found in tropical to cool temperate woodlands and riparian habitats in semi-arid climates along the east coast of Queensland, adult koalas weigh anywhere from 4 to 15 kilograms. Their diet consists strictly of eucalyptus leaves and their lifespan is approx. 10 to 12 years in the wild, and 16 to 18 years in captivity.

They are undoubtedly one of this country's most iconic and cutest creatures and Kuranda Koala Gardens is one of the few places where you can hold a Koala for a souvenir photo (extra cost). You also have the opportunity to pat and hand feed swamp wallabies, eastern grey kangaroos and red legged pademelons.

Kuranda Koala Gardens is located in the world famous Kuranda rainforest village and is operated by the decedents of one of Kuranda's pioneering families. Learn more about the local history and visit the only nocturnal exhibit in the Tableland region, giving you the opportunity to see up close some night-loving marsupials like the Greater Bilby, Northern Bettong and the rare Mahogany Glider.

SIGHTS

- Cairns Museum
- Cairns Art Gallery
- Josephine Falls
- Palm Cove
- Samurai Gallery Australia

RUSTY'S MARKETS

If you thought the colours of the landscape up here were bright and bold, wait until you see the region's local produce at Rusty's Markets.

Rusty's has been operating from its Grafton St location for more than 30 years, packing over 180 stalls into one city block with everything from sarongs to Vietnamese coffee, fruit and veggies to crocodile-leather bracelets. The perfect place to find an unique souvenir or indulge in the delicious local cuisine.

DISCOVER SILVERSEA TRAVEL BLOG

TRANSPORTING YOU INTO THE AUTHENTIC BEAUTY OF THE WORLD

Featuring in-depth stories and striking original micro-documentaries on everything from the allure of the Atacama Desert to the peculiar dance of blue-footed boobies, *Discover* enables travellers to journey deeper, transporting readers into the authentic beauty of the world.

Discover reflects the features that enrich Silversea voyages to over 1,000 destinations in all seven of the world's continents. Leveraging the knowledge and experience of its industry-leading Expedition Team, Silversea will provide authoritative insight on ornithology, botany, marine biology, glaciology, and various other fascinating subjects.

Browse *Discover*, Silversea's travel blog: discover.silversea.com



DISCOVER
SILVERSEA

DESIGNER SUNGLASSES

► BOUTIQUES AT SILVERSEA

THE BOUTIQUE, DECK 5

Proper eyewear is as essential to the eyes as sunscreen is to the skin, and thanks to several top designers, we can all look good as we look well. Their sunglasses also make it easy to update your style with a little detail. Choose from designs by the venerable yet forward-thinking Prada, Tom Ford, Gucci, Ray-Ban, the essence of cool. Come and see us in the Boutique, we will be delighted to help you find the perfect memento of your travels.



TODAY'S SPA SPECIALS

THE PERFECT TIME TO VISIT THE ZÀGARA SPA

► THE ZÀGARA BEAUTY SPA, DECK 10

Take advantage of spa time in port and receive 25% off Spa Signature treatments. Choose from an array of massages, facials and delicious body treatments. The serenity of a port day is the perfect time to visit the Zàgara Spa. A journey of the five senses and an interlude for musing, savor a Zàgara moment.



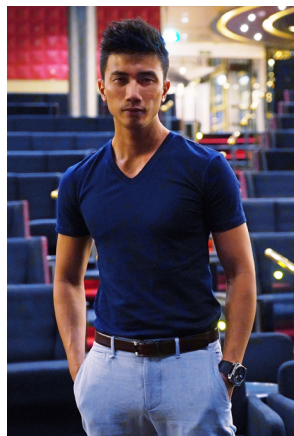
ZÀGARA

THE MAGIC OF ZLWIN CHEW

TONIGHT'S SHOW

► AT 6:30PM
THE SHOW LOUNGE, DECK 6

"When you want something, the whole universe conspires to help you achieve your dream." This was the quote that hung close to the heart of a young Zlwin Chew starting out in the world of magic 15 years ago. With a deck of cards and a head full of dreams, Zlwin started his career working at the top clubs in his country, Malaysia. His shows are often sought after by luxury brands such as Louis Vuitton and Chanel and he travels worldwide from Istanbul to Paris, London to Amsterdam, Oman to the Maldives and all across Asia and Australia. Zlwin's shows have often been referred to as "Something so entirely different from what others are doing". Rightly so, because he believes in using his time on stage to share a message of hope and light in a struggling world. He fuses magic acts with thought-provoking messages and inspiring poems, performing a unique kind of magic that entertains the eyes and moves the heart.



BENEFITS OF BOOKING YOUR NEXT CRUISE ON BOARD

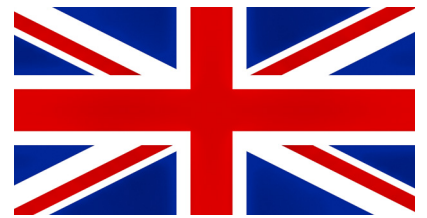
If you are thinking about another cruise, there is no better time to book than while you are here on board. You'll enjoy an additional 5% onboard booking savings, combinable with your Venetian Society status.

This means that you can save up to 10% on selected sailing if you book today on board. The reservation is made on behalf of your travel agent or personal Cruise Consultant at Silversea.



► For more information, please contact your Future Cruise Manager Gui on Deck 5 or extension 854

TODAY'S EVENT



► OUR WORLD CRUISE TRADITIONS

Sunday Family Dinner in La Terrazza

This Sunday we take you on a culinary journey to bustling Great Britain! Traditional English delights combined with wonderful musical entertainment await you in La Terrazza from 7:00pm.

Did you know?

Yorkshire pudding dates back to at least to the 1700s, when it was described as "Dripping Pudding" in *The Whole Duty of a Woman*. Cooks in the 18th century roasted meat on a spit over the flames in the kitchen fireplace, where it dripped as it cooked. The puddings were carefully placed beneath to catch and be flavoured by those drippings.

Bon Appétit!





SERVICES

ZÀGARA SPA | DECK 10
BEAUTY SALON AND BARBER SHOP
Dial 5011 for appointments.
8:00am – 8:00pm
Later appointments until 10:00pm available on request.

SAUNA & STEAM ROOM
DECK 10
8:00am – 8:00pm

FITNESS CENTRE | DECK 10
6:30am – 8:00pm
Limited spaces available for classes.
Age restriction: over 18 to use the facilities. 16–18 allowed in with guardian.

FUTURE CRUISE MANAGER
DECK 5
1:00pm – 6:00pm
Please dial 854 to arrange a private appointment or consult your suite ITV to request an appointment.

BOUTIQUES | DECK 5
CLOSED
Due to Customs Regulations
Toiletries and other essential items are available for purchase upon request through your Butler.

CASINO* | DECK 8
CLOSED
Due to Customs Regulations
*Age restriction: over 18 to use the facilities.

SHORE CONCIERGE DESK | DECK 5
Dial 858 for assistance.
during daily opening hours.
7:30am – 10:30am | 4:00pm – 7:00pm

GUEST RELATIONS MANAGER
DECK 5
Dial 800 for assistance.
8:00am – 12:00noon | 4:00pm – 7:00pm

MEDICAL CENTRE | DECK 3
Dial 931 during clinic hours.
8:00am – 9:00am | 5:00pm – 6:00pm

Medical assistance is also available by appointment.
Dial 800 (Reception) after hours.
Emergency service is available 24 hours a day.

Please use the midship elevator or midship stairs to reach the clinic. Kindly ask about charges prior to consultation.

IN THE EVENT OF AN EMERGENCY PLEASE DIAL 911

BREAKFAST

THE RESTAURANT (DECK 4)
À la Carte 8:00am – Last Seating 9:30am

LA TERRAZZA (DECK 7)
Buffet 7:00am – Last Seating 10:00am

LUNCH

THE RESTAURANT (DECK 4)
À la Carte 12:00noon – Last Seating 1:30pm

LA TERRAZZA (DECK 7)
Buffet 12:00noon – Last Seating 2:00pm

THE GRILL (DECK 8) *
À la Carte 12:00noon – Last Seating 3:30pm

OPEN ALL DAY

THE ATRIUM BAR (DECK 5)
Light Snacks 6:30am – 10:00pm

DINNER

As a courtesy to your fellow guests please respect the times of your dinner reservation.

THE RESTAURANT (DECK 4)
À la Carte 7:00pm – Last Seating 9:30pm

LA TERRAZZA (DECK 7) **
Sunday Family Dinner
À la Carte 7:00pm – Last Seating 9:30pm

THE GRILL (DECK 8) */**
À la Carte 7:00pm – Last Seating 10:00pm

LA DAME (DECK 7) **
À la Carte 7:00pm – Last Seating 9:30pm
Gentlemen: Jacket required
A dining fee per person applies

Should you wish to cancel your reservation at La Dame, please note that you must do so by latest 2:00pm on the day of the reservation, otherwise the full cover fee per person will be billed to your Guest Account.

* *Weather permitting*
** *Reservations required*

ALL AROUND DINING

24-hour
The menu is available on the TV.
To place your order please contact your butler or call extension 815. All Around Dining is also available in other public areas when our dining venues are not open for service.

BAR HOURS

9:00am – 10:00pm Pool Bar * [DECK 8]
10:00am – until late Panorama Lounge [DECK 8]
6:00pm – until late The Bar [DECK 5]
9:00pm – until late Connoisseur's Corner [DECK 8]

At Silversea Cruises, we take maximum food precautionary measures to ensure the safest quality product is offered to our guests; Worldwide Public Health Services advise that consuming raw or undercooked meats, seafood, shellfish, eggs, milk, or poultry may increase your risk of food-borne illness, especially if you have certain medical conditions.

RESERVING DECK CHAIRS

Kindly note deck chairs cannot be reserved. When you leave your sun chair for long periods, please take your books, lotion or other items with you in order that other Guests may use the deck chairs. Unattended items on the chairs will be removed by our personnel after approximately one hour and sent to Reception (Lost & Found). Thank you for your cooperation in this matter. Guests who need assistance with deck chairs, may contact the pool bartender.

SUNDAY, 3 MARCH 2024

SUNRISE 6:17AM • SUNSET 6:40PM

AUSTRALIA - BIO SECURITY REGULATIONS

Please note, it is **not permitted to carry any food/beverage items with you when leaving the ship**. Thank you for your cooperation.

A GENERAL DRILL FOR THE CREW WILL BE HELD THIS MORNING

This exercise does not involve guests, however you are kindly asked to minimize your movement around the ship during the drill. Please use caution when approaching fire doors in the ship's corridors, as they may be automatically closed from the Navigational Bridge. As this essential drill involves all crew members, we ask for your understanding should any service interruption occur.

GOOD MORNING

7:00	Pathway to Yoga with Personal Trainer Manmohan	Aerobics Room (10)
8:30	Stretch and Release with Personal Trainer Manmohan	Aerobics Room (10)
9:00	Today's Silver Quiz, Crossword Puzzle, and Sudoku are available (return the Silver Quiz to Reception by 3:00pm - prize points for the most accurate quiz that is returned earliest)	The Atrium (5)
9:00	Board Games are available	Card Room (7)
9:00	Shuffleboard Available (until 7:00pm)	Shuffleboard Court (10)
10:00	Table Tennis Available	Lobby (3)
10:00	Elemis Pro-Collagen Age Defy	Zàgara Spa Reception (10)
10:15	A General Crew Drill will be held this morning (starts approx. 10:15am)	
10:45	Come and visit us for our Surprise Spa Special – today only!	Zàgara Spa Reception (10)

GOOD AFTERNOON

2:00	Fitness Seminar: Walking in Comfort	Observation Lounge (10)
4:45	Team Trivia with your Cruise Director Moss for fun and prize points	Panorama Lounge (8)
5:15	Interdenominational Worship Service led by fellow guests Reverends Hope and Bill Eakins	The Show Lounge (6)
5:30	Golf Putting Challenge with the Entertainment Team. Prize points to be won!	Lobby (4)

GOOD EVENING – DRESS CODE: CASUAL

6:00	Piano Vocalist Remon performs while you enjoy a pre-dinner cocktail	The Bar (5)
6:00	The <i>Silversea</i> Trio and Guitarist Javier alternate to play during cocktail hour	Panorama Lounge (8)
6:30	Pre-Dinner Showtime! <i>Silversea</i> proudly presents "The Magic of Zlwin Chew" Trained in the Magic capital of the world – Las Vegas, with stage performances in over 35 countries from America to Europe, the Middle East to New Zealand. Experience spectacular magic by Asia's leading Magician, Zlwin Chew	The Show Lounge (6)
6:45	Solo Travellers Meet and Greet with your Gentlemen Hosts Lyle and Geoff	Panorama Lounge (8)
9:00	Piano Vocalist Remon and Guitarist Javier alternate to perform for your listening pleasure	The Bar (5)
9:00	The <i>Silversea</i> Trio plays for your musical entertainment	Panorama Lounge (8)
9:30	ALL ABOARD! <i>Silver Shadow</i> prepares to sail	
10:00	<i>Silver Shadow</i> sails for Darwin, Australia	
10:30	Dance the night away with DJ Gabor	Panorama Lounge (8)

GOING ASHORE IN

CAIRNS, AUSTRALIA

EXCURSIONS

All excursions depart at the times listed below from the **PIER**. As a courtesy to your fellow guests and to allow the punctual departure of your excursion, we ask all participants to proceed ashore **10 minutes** prior to your departure time. If you are late, unfortunately the transportation will not wait. Shore Concierge staff will be available shoreside to assist you.

Shore Concierge staff will be available shoreside to assist you.

Please do not forget to bring your tickets.

CNS-K	GREAT BARRIER REEF ADVENTURE	8:30AM
CNS-SA	ABORIGINAL RAINFOREST JOURNEY.....	8:30AM
CNS-C	SPECTACULAR REEF & RAINFOREST OVERFLIGHT.....	8:50AM

HOSPITALITY DESK

A local Hospitality Desk will be available shoreside. The local Representatives will be able to answer detailed questions and direct guests to their favoured locations. Complimentary maps might be available.

ENRICHMENT LECTURES

Enrichment lectures by our Guest Lecturers are available on demand from the in-suite TV system the day after the live presentation:

Select - Entertainment / Silversea Videos / Destination Lectures or Enrichment Lectures

Our Guest lecturer biographies are located on your in-suite TV:

Select - Your Stay / Guest Compendium

HAND WASHING & HAND SANITIZING

Keeping hands clean through improved hand hygiene is one of the most important steps we can take to avoid getting sick and spreading germs to others. Many diseases and conditions are spread by not washing hands with soap and clean, running water. Alcohol-based hand sanitizers can quickly reduce the number of germs on hands.

SHIP PROCEDURES

An announcement will be made when the ship has been cleared by local authorities for guests to proceed ashore. You are kindly requested to remain clear of the gangway area until then.

Please remember to carry your **Suite Key Card and a government-issued Photo ID** whenever going ashore as this is your only valid identification for reboarding the vessel.

PIER INFORMATION

Silver Shadow is docked in Cairns, Australia at Cairns Cruise Terminal.

IMPORTANT NOTICE

Silversea charges in United States Dollars for all shipboard transactions. We would like you to be aware that your credit card company may charge a foreign transaction fee. Silversea processes shipboard credit card transactions through the United Kingdom. Should you wish to register a different credit card to settle your account, please see our Reception Staff on Deck 5.

CURRENCY EXCHANGE

The official local currency is the Australian Dollar (AUD). Guests going ashore can expect the following rates of exchange:

1 USD = 1.53 AUD approx.

1 EUR = 1.65 AUD approx.

1 GBP = 1.93 AUD approx.

SHIP'S AGENT

(for use in emergencies only)

Wilhelmsen Port Services

4/58 Perkins Street

Railway Estate QLD 4810

Phone: +61 484 397 996

Email: wps.townsville@wilhelmsen.com

**ALL ABOARD
9:30PM**

Please note this useful information when going ashore.

SILVER SHADOW SATELLITE PHONE NUMBER: +1-786-322-5796