

Chronicles

News and Information for all onboard events

WEDNESDAY, 15 JANUARY 2025

OSAKA, JAPAN
Arrival: 8:00 a.m.
Overnight Stay

DRESS CODE: ELEGANT CASUAL

Ladies: trousers, blouses, skirts, or casual dresses.
Gents: open-collar shirts and slacks, jacket optional.
No jeans, shorts or flip flop type footwear after 6:00 P.M. in indoor venues.

TODAY'S WEATHER

Cloudy with Periodic Rain

High: 48°F 9°C

Low: 38°F 3°C



OSAKA, JAPAN

Aboard Silver Dawn

PLAN AHEAD

Upcoming ports



| DATE | PORT | ARRIVE | DEPART |
|--------|------------|----------|------------|
| 16 Jan | Osaka | - | 11:00 p.m. |
| 17 Jan | Day at Sea | - | - |
| 18 Jan | Hiroshima | 8:00a.m. | 10:00p.m. |

YOUR EXPERIENCES ASHORE

SHORE EXCURSION SUGGESTIONS

Enhance your voyage with our exceptional excursions. From day excursions or private arrangements, we offer you the world. Please visit the Shore Concierge Desk to discuss your options and reserve your excursions. If you prefer, you may request your excursions via MyCruise on your in-suite TV or by completing the Excursion Booking Form in your suite. Your butler will be pleased to deliver this if completed by our deadline.

OSA-D / The View of Osaka

4.00 Hours | \$119

Experience the stunning beauty and history of Osaka from two unique perspectives during this panoramic, half-day sightseeing excursion.

OSA-E / Kyoto On Your Own Exploration

8.00 Hours | \$149

Experience the splendid beauty and landmarks of bustling Kyoto at your leisure during this full-day, self-guided sightseeing excursion.

DECK 5 EXT. 551

OPENING HOURS:

7:30 A.M. - 10:30 A.M. | 4:30 P.M. - 7:00 P.M.



OSAKA, JAPAN

The City has thrown off its shackles and stepped out of the shadows

Japan's third-biggest city has thrown off its shackles and stepped out of the shadows to light up the sky with glaring neon signs and a larger than life outlook. Giant octopuses cling to buildings and bustling restaurants pack in the crowds in this great and garish place, which is Japan at its most friendly, extroverted and flavourful. So dive in headfirst to experience an all-out sensory assault of delicious food, shopping cathedrals and glittering temples. Dotombori Bridge bathes in the multicoloured, jewel-like lights of signage-plastered buildings, and the neon lights dance on the canal's waters below.

Osaka is known as the nation's kitchen, and the Kuromon Ichiba Market has served as the city's spot to tuck in for almost 200 years. Full of street food stalls - try pufferfish, savoury Okonomiyaki pancakes, or ginger and onion flavoured octopus, among the endless feast of exotic flavours. Osaka Castle is another of the city's landmarks, built in the 16th century by Toyotomi Hideyoshi. A modern museum now waits inside, where you can learn about the country's history, and why this castle is a symbol of Japanese unity. Be sure to take the elevator up to the observation deck for a panoramic view of Osaka's spread. A colourful park encloses the castle and blooms with an ocean of pale pink cherry blossom during the season - the elegant black tiers rising from the pink haze below is one of Osaka's most alluring visions. Kyoto's peaceful cultural treasures and temples are also just a short jaunt away on Japan's sleek trains, should you wish to explore further afield.

SIGHTS

- Osaka Castle
- Universal Studios Japan
- Dotonbori
- Osaka Aquarium Kaiyukan
- Sumiyoshi Taisha
- Umeda Sky Building
- Shitenno-ji
- Tsutenkaku
- Hozen-ji Temple

SHOPPING

Osaka has several world class shopping districts and miles of shopping arcades, malls and streets. Osaka's shopping combines upscale, brand name and designer goods with inexpensive thrift shops and discount chains.

The city's two largest shopping districts are Umeda in the north and Namba in the south. The Umeda area (also known as Kita) is served by JR Osaka Station and Umeda Station, while the Namba area (also known as Minami) is served by Namba Station. Both areas have large concentrations of department stores, shopping arcades and some of Japan's most extensive underground shopping malls.

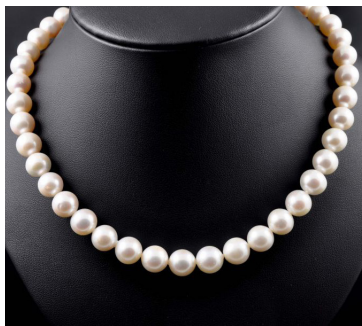
In between Umeda and Namba is the covered shopping arcade Shinsaibashi-suji, one of Osaka's oldest and busiest shopping destinations, which runs about 600 meters in length.

HUBERT PEARLS

TIMELESS AND ELEGANT

THE BOUTIQUE
DECK 8

The history of the pearl goes back over six thousand years. The pearl is the oldest gemstone known to man. From the White South Seas to exotic Tahitians and naturally coloured Golden from Indonesia and the Philippines, they are a timeless classic.



SPATOPIA SPECIAL

INDULGE YOURSELF FROM HEAD TO TOE

THE OTIVM BEAUTY SPA
DECK 6



Indulge yourself from head to toe for 75 glorious minutes with all of these treatments:

- Full Body Hot Stone or Bamboo Massage
- Full Body Skin Brushing
- Foot and Ankle Massage
- Hand and Arm Massage

DRESS CODE: ELEGANT CASUAL

THE ONBOARD DRESS CODE OPERATES AFTER 6:00 P.M.

ELEGANT CASUAL

On casual evenings, ladies may opt for trousers, blouses, skirts, or casual dresses. Gentlemen can wear open-collar shirts and slacks. A jacket is optional.

REGARDLESS OF THE DAILY DRESS CODE:

- After 6 pm, indoor spaces prohibit jeans, shorts, hats, caps, sneakers, or flip-flop-type footwear.
- Casual wear is always suitable in outdoor venues.
- Gentlemen dining at La Dame are required to wear a jacket.



WI-FI CONNECTION

Experience seamless Wi-Fi connectivity during your voyage.

1. Select 'Silversea Guest Wi-Fi' from the list of available networks.
2. Scan the QR code to gosilversea.com.
3. Scroll down and Create Your Account
4. Press the green button START

Once connected, consider a Premium access upgrade to meet your voice or video calls or streaming needs.

For assistance, please reach out to the Reception Desk.



BEN MILLS IN CONCERT

TONIGHT'S SHOW WITH BEN MILLS

AT 9:15 PM
VENETIAN LOUNGE, DECK 5

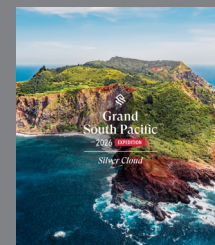
Named by Sir Rod Stewart as the next Joe Cocker, the electrifying multi-instrumentalist and vocalist Ben Mills is set to ignite the stage with a high-octane show packed with iconic hits from the 60's and 70's!



GRAND VOYAGE SOUTH PACIFIC 2026

Embark on an enviable 76-day expedition onboard Silver Cloud for our most immersive South Pacific expedition ever, exploring 11 countries including some of the world's most remote and pristine destinations. Journey from Fiji's crystal-clear waters to Australia's rugged red Kimberley coast, encountering treasures such as Aitutaki's "most beautiful lagoon," the standing stones at Easter Island and Robinson Crusoe Island – a UNESCO Biosphere Reserve – in the company of fascinating experts. Enjoy thrilling Zodiac rides, snorkeling, diving and cultural encounters in faraway places such as Vanuatu and Papua. And discover the natural wonders and vibrant marine life of Abrolhos and Montebello Islands on an unparalleled adventure.

Book onboard and receive exclusive 5% onboard savings!



Your Future Cruise Team Barrie and Lauren will assist you with any booking enquiries.

UPGRADE TO PREMIUM ACCESS

| | PREMIUM WI-FI | STANDARD WI-FI |
|------------|---------------|----------------|
| BROWSE | ✓ | ✓ |
| MESSAGE | ✓ | ✓ |
| EMAIL | ✓ | ✓ |
| POST | ✓ | – |
| VOICE CALL | ✓ | – |
| VIDEO CHAT | ✓ | – |
| STREAM | ✓ | – |



ALL DAY DINING

BREAKFAST

ATLANTIDE (DECK 4)

À la Carte 8:00 a.m. – Last Seating 9:30 a.m.

LA TERRAZZA (DECK 7)

Buffet 7:00 a.m. – 10:00 a.m.

LUNCH

ATLANTIDE (DECK 4)

À la Carte 12:00 p.m. – Last Seating 1:30 p.m.

KAISEKI (DECK 4)

À la Carte 12:00 p.m. – Last Seating 2:30 p.m.

LA TERRAZZA (DECK 7)

Buffet 12:00 p.m. – 2:00 p.m.

THE GRILL (DECK 10) *

À la Carte 12:00 p.m. – Last Seating 3:30 p.m.

OPEN ALL DAY

ARTS CAFÉ (DECK 8)

Light Snacks 6:30 a.m. – 11:00 p.m.

SPACCANAPOLI (DECK 11)

À la Carte 11:00 a.m. – 11:00 p.m.

* Weather permitting

** Reservations required

IN-SUITE DINING

24-hour

The menu is available on the TV.

To place your order please contact your butler or call extension 500. In-Suite Dining is also available in other public areas when our dining venues are not open for service.

At Silversea Cruises, we take maximum food precautionary measures to ensure the safest quality product is offered to our guests; Worldwide Public Health Services advise that consuming raw or undercooked meats, seafood, shellfish, eggs, milk, or poultry may increase your risk of food-borne illness, especially if you have certain medical conditions.

HAND WASHING & HAND SANITIZING

Keeping hands clean through improved hand hygiene is one of the most important steps we can take to avoid getting sick and spreading germs to others. Many diseases and conditions are spread by not washing hands with soap and clean running water. Alcohol-based hand sanitizers can quickly reduce the number of germs on hands. Please use the hand sanitizers situated at the entrance door of the dining outlets and various locations around the ship.

DINNER

As a courtesy to your fellow guests please respect the times of your dinner reservation.

ATLANTIDE (DECK 4)

À la Carte 6:00 p.m. – Last Seating 8:30 p.m.

S.A.L.T. Kitchen (DECK 4)

À la Carte 6:30 p.m. – Last Seating 9:00 p.m.

KAISEKI (DECK 4) **

À la Carte 6:30 p.m. – Last Seating 9:00 p.m.

A dining fee per person applies

LA TERRAZZA (DECK 7) **

À la Carte 6:30 p.m. – Last Seating 9:00 p.m.

SILVER NOTE (DECK 7) **

À la Carte 7:30 p.m. – Last Seating 10:00 p.m.

THE GRILL (DECK 10) */**

À la Carte 6:30 p.m. – Last Seating 9:00 p.m.

LA DAME (DECK 8) **

À la Carte 6:30 p.m. – Last Seating 9:00 p.m.

Gentlemen: Jacket required

A dining fee per person applies

Should you wish to cancel your reservation at La Dame, please note that you must do so by latest 2:00pm on the day of the reservation, otherwise the full cover fee per person will be billed to your Guest Account.

BAR HOURS

9:00am – 10:30pm

10:00am – 8:00pm

9:00pm - until late

2:00pm – until late

6:00pm – until late

6:30am – until late

6:00pm – 11:00pm

7:00pm – until late

9:00pm – until late

*Weather permitting

Pool Bar * [Deck 10]

Panorama Lounge [Deck 9]

Dolce Vita [Deck 5]

S.A.L.T. Bar [Deck 4]

Arts Café [Deck 8]

Observation Library [Deck 11]

Silver Note [Deck 7]

Connoisseur's Corner [Deck 9]

SERVICES

OTIVM SPA | DECK 6

BEAUTY SALON AND BARBER SHOP

Dial 600 for appointments.

8:00 a.m. – 8:00 p.m.

Later appointments until 10:00 p.m.

available on request.

SAUNA & STEAM ROOM | DECK 6

8:00 a.m. – 8:00 p.m.

FITNESS CENTRE | DECK 6

5:00 a.m. – 10:00 p.m.

Limited spaces available for classes.

Age restriction: over 18 to use the

facilities. 16-18 allowed in with guardian.

FUTURE CRUISE SALES | DECK 5

Please dial 60515 or consult your suite ITV to request an appointment.

8:00 a.m. – 12:00 p.m. | 4:00 p.m. – 7:00 p.m.

BOUTIQUES | DECK 8

Closed due to Customs Regulations

Window gallery pop up boutique

open all day for preview and viewing.

CASINO | DECK 7

Closed due to Customs Regulations

Age restriction: over 18 to use the facilities.

SHORE CONCIERGE DESK | DECK 5

Dial 551 for assistance

during daily opening hours.

7:30 a.m. - 10:30 a.m. | 4:30 p.m. - 7:00 p.m.

GUEST RELATIONS MANAGER | DECK 5

Dial 60502 for assistance.

8:00 a.m. – 12:00 p.m. | 4:00 p.m. – 8:00 p.m.

MEDICAL CENTRE | DECK 3

Dial 10333 during clinic hours.

8:00 a.m. – 9:00 a.m. | 5:00 p.m. – 6:00 p.m.

Medical assistance is also available by appointment.

Dial 555 (Reception) after hours.

Emergency service is available 24 hours a day.

Please use the Forward elevator or Forward stairs to reach the clinic.

Kindly ask about charges prior to consultation.

**IN THE EVENT OF AN
EMERGENCY PLEASE DIAL 999**

Wednesday, 15 January 2025

Sunrise 7:05 a.m. • Sunset 5:10 p.m.

MANDATORY SAFETY DRILL

The Safety Drill is mandatory to all newly embarked Guests by regulation.
Please watch the safety video in your suite and reach your Muster station between 5:30p.m. - 7:30p.m. to validate the process.

IMPORTANT INFORMATION

Please be informed that Japans Authorities do not permit to bring any closed or open food with you when leaving the vessel. Any food you might have should be left in your cabin. Thank you for your attention.

GOOD MORNING

| | | |
|-------|---------------------------------------------------------------------------------------------------------------------------------------------------------------------------------------------------------------------------------------------------------------------------------------------------------|-----------------------------|
| 7:00 | Fab Abs (sign up required) | Fitness Centre (6) |
| 8:00 | Silver Dawn is scheduled to dock in Osaka, Japan and stays overnight Once the vessel has been cleared by local authorities, Cruise Director Moss will give weather and gangway location information (Clearance announcement broadcasted on Bridge camera channel on your suite television) | |
| 8:00 | Pure form Pilates (sign up required) | Fitness Centre (6) |
| 9:00 | Today's Silver Quiz, Crossword Puzzle and Sudoku are available (Return the Silver Quiz to Reception by 3:00 pm - prize points for the most accurate quiz that is returned earliest) | Arts Café (8) |
| 9:00 | Board games will be available for your enjoyment (unhosted) | Observation Lounge (11) |
| 9:00 | Shuffleboard will be set up for your enjoyment throughout the day (unhosted) * weather permitting | Outside Panorama Lounge (9) |
| 9:00 | Complimentary Massage taster | OTIVM Spa (6) |
| 10:00 | Table Tennis will be available for your enjoyment (unhosted) | Forward (4) |
| 11:00 | Footprint analysis for hip,knee,and back pain | Fitness Centre (6) |

GOOD AFTERNOON

| | | |
|------|-------------------------------------------------------------------------------------------------------------|-------------------------|
| 4:00 | Bingo! with a member of the Entertainment Cruise Staff | Panorama Lounge (9) |
| 4:00 | Three ways to feel better with Acupuncture, herbs & cupping with Dr. Liliana | OTIVM Spa (6) |
| 4:00 | Hubert Pearls Gallery: Discover the enchanting world of pearls, available for viewing at our window gallery | Boutique (8) |
| 4:30 | Restore Facial Contour with Dr Marco | OTIVM Spa (6) |
| 4:45 | Team Trivia - Join Cruise Director Moss for this daytime activity | Panorama Lounge (9) |
| 5:00 | Friends of Bill W. Meet (unhosted) | Observation Lounge (11) |
| 5:30 | Evening Stretch (sign up required) | Fitness Centre (6) |
| 5:30 | Golf Putting Competition: Join your Entertainment Cruise Staff for this daytime activity | Lobby (4) |
| 5:30 | Catholic Mass with Father Adam | Silver Note (7) |

GOOD EVENING

DRESS CODE: ELEGANT CASUAL

| | | |
|-------|-------------------------------------------------------------------------------------------------------------------------------------------------------------------------------------------------------------------------------------------------------------------------------------------------------------------|---------------------|
| 6:00 | Pianist Remon and Guitar Entertainer Felipe alternate performing for guests' listening pleasure | Dolce Vita (5) |
| 6:15 | Silver Dawn Band plays for your listening pleasure | Panorama Lounge (9) |
| 6:30 | Solo Travellers get together with Gentlemen hosts Brian and Jeff | Dolce Vita (5) |
| 7:30 | Jazz Pianist André plays for guests' listening pleasure | Silver Note (7) |
| 8:15 | Join Silver Note Jazz Duo Esther and André as they entertain you with their live music | Silver Note (7) |
| 9:00 | Guitar Entertainer Felipe performs for guests' listening pleasure | Panorama Lounge (9) |
| 9:00 | Pianist Remon and Guitar Entertainer Felipe alternate performing for guests' listening pleasure (until late) | Dolce Vita (5) |
| 9:15 | Showtime! Silversea Proudly Presents Headline Entertainer Ben Mills in Concert Named by Sir Rod Stewart as the next Joe Cocker, the electrifying multi-instrumentalist and vocalist Ben Mills is set to ignite the stage with a high-octane show packed with iconic hits from the 60's and 70's! | Venetian Lounge (5) |
| 10:15 | DJ Gabor invites you to a party to celebrate the songs you love | Panorama Lounge (9) |

Evening Dress Code

*Some of the below mentioned dress codes may be subject to change due to operational reasons.

| | | | |
|--------------------------------|-----------------|-----------------------------|-----------------|
| 13 Jan – Tokyo, Japan..... | Elegant Casual | 21 Jan – Day at sea..... | Formal Optional |
| 14 Jan – Day at sea..... | Formal Optional | 22 Jan – Naha, Okinawa..... | Elegant Casual |
| 15 Jan – OSAKA, Japan..... | Elegant Casual | 23 Jan – Day at sea..... | Elegant Casual |
| 16 Jan – OSAKA, Japan..... | Elegant Casual | 24 Jan – Xiamen, China..... | Elegant Casual |
| 17 Jan – Day at sea..... | Elegant Casual | 25 Jan – Xiamen, China..... | Elegant Casual |
| 18 Jan – Hiroshima, Japan..... | Elegant Casual | 26 Jan – Hong Kong..... | Elegant Casual |
| 19 Jan – Beppu, Japan..... | Elegant Casual | 27 Jan – Hong Kong..... | Elegant Casual |
| 20 Jan – Kagoshima, Japan..... | Elegant Casual | | |

SHIP PROCEDURES

Remember to carry your **Suite key card and Original Passport** whenever going ashore as this is your only valid identification for reboarding the vessel.

PIER INFORMATION

Silver Dawn is docked in Osaka Tempozan

Passenger Terminal.

Address: 11-8, 3-Chome, Chikko, Minato-ku,

Osaka-shi, Osaka, 552-0021

大阪天保山客船ターミナル

大阪府大阪市港区築港3丁目11-8

IMPORTANT NOTICE

Silversea charges in United States Dollars for all shipboard transactions. We would like you to be aware that your credit card company may charge a foreign transaction fee. Silversea processes shipboard credit card transactions through the United Kingdom. Should you wish to register a different credit card to settle your account, please see our Reception Staff on Deck 5.

CURRENCY EXCHANGE

The local currency is Japanese Yen (JPY). Guests going ashore can expect the following rates of exchange:

1 USD = 157.68 JPY approx.

1 EUR = 161.70 JPY approx.

1 GBP = 192.81 JPY approx.

SHIP'S AGENT

(for use in emergencies only)

JAPAN

BLUE OCEAN AGENCY

Phone: +81-80-4774-3511

Going ashore in *Osaka, Japan*

EXCURSIONS

The excursions depart at the times listed below from the pier ashore. As a courtesy to your fellow guests and to allow the punctual departure of your excursion, we ask all participants to proceed ashore **10 minutes** prior to your departure time.

Please do not forget to bring your excursion tickets, Suite Key Card and Original Passport.

| | | |
|-------|----------------------------------------------------------------------------------------------------------------------|-----------|
| OSA-B | KYOTO HIGHLIGHTS & HIGH-SPEED SHINKANSEN TRAIN | 8:30 a.m. |
| OSA-A | INTRODUCTION TO OSAKA | 8:30 a.m. |
| OSA-E | KYOTO ON YOUR OWN EXPLORATION | 8:45 a.m. |
| OSA-D | THE VIEW OF OSAKA | 9:00 a.m. |
| OSA-S | S.A.L.T. ESSENTIAL TASTES: CELEBRATING THE CUISINE OF OSAKA AND THE SCIENCE OF UMAMI WITH A STAR JAPANESE CHEF | 9:00 a.m. |
| OSA-F | MT. ROKKO & SAKE MUSEUM | 9:15 a.m. |
| OSA-L | GEISHA PERFORMANCE WITH LOCAL DINNER | 4:15 p.m. |

HOSPITALITY DESK

There will be a Hospitality Desk available on the Pier. The hospitality representative will be able to answer detailed questions and to direct guests to their desired locations. Complimentary brochures and maps may also be available.

SHUTTLE BUS

A complimentary Shuttle Bus Service will be operating between the Pier to "Dotonbori", city area from 9:00a.m. until 11:00 p.m. (last bus from town). Distance to city: approximately a 30-40 minute drive (one way). We recommend arriving at least 10 minutes prior to the shuttle bus departure at the pickup locations. Shuttle bus schedule will be posted at the Shore Concierge Desk, Deck 5 and at the gangway.

EXCURSIONS

Port information and full tour descriptions are available on the interactive TV system in your suite for each port of call for this voyage. Excursion tickets cannot be exchanged after cancellation deadline. Full charge applies for the additional excursion on the same day.

For tour cancellations, tickets must be returned before deadline to Shore Concierge Desk, Deck 5.

Please check daily your in suite TV for important messages regarding your excursions.

GOING ASHORE INDEPENDENTLY

The Shore Concierge desk takes pride in its ability to help guests on tour as well as guests who prefer individual sightseeing. The team will make private arrangements and suggest itineraries for independent exploration. If you just want to grab a taxi or to walk ashore, the Shore Concierge is eager to supply local information and useful tips.

Overnight Stay in Osaka

PLEASE NOTE THIS USEFUL INFORMATION WHEN GOING ASHORE.

SILVER DAWN SATELLITE PHONE NUMBER: +1 786 605 5750