

# Chronicles

*News and Information for all onboard events*

**FRIDAY, 17 JANUARY 2025**

EN ROUTE TO HIROSHIMA, JAPAN

**DRESS CODE: ELEGANT CASUAL**

For Ladies: may opt for trousers, blouses, skirts, or casual dresses.  
For Gentlemen: can wear open-collar shirts and slacks. A jacket is optional. No jeans, shorts or flip flop type footwear after 6:00 P.M. in indoor venues.

**TODAY'S WEATHER**

*Mostly Cloudy*

**High: 46°F 8°C**

**Low: 41°F 5°C**



## AT SEA

*Aboard Silver Dawn*

## THERMAGE CPT

### SKIN TIGHTENING THERAPY

THE OTIVM BEAUTY SPA  
DECK 6

Thermage CPT is the premier non-invasive, skin-tightening therapy that uses radio frequency to improve the appearance of sagging or loose skin on the face and body. Tighten and contour in just one treatment.

## NEW 2026/2027 VOYAGES

AT 4:00 P.M.  
VENETIAN LOUNGE, DECK 5

Where will your wanderlust lead?

Japan's cherry blossoms? The Carnival in Rio? Antarctica? Our 2026/27 ocean and expedition voyages get you closer to the remote, the rare, and the remarkable.

Whether you seek a tropical escape, an Arctic adventure, or the deeper immersion of a Grand Voyage, each journey offers an intimate exploration of culture, nature, history, and paths less travelled.

From ancient cities to secluded islands, from manmade marvels to earthly wonders, the world is yours to discover.

## HUBERT: NEW COLLECTIONS

### THE ONBOARD BOUTIQUE

THE BOUTIQUE,  
DECK 8

Just arrived, the newest collections from Hubert Gems. Visit our on board boutiques to enjoy an up-close and personal look at these one of a kind pieces designed exclusively for this voyage.

## SHIMI GOODMAN INTERNATIONAL TENOR

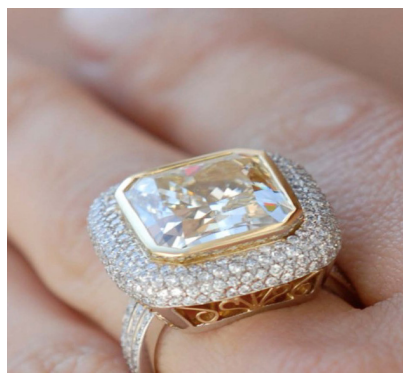
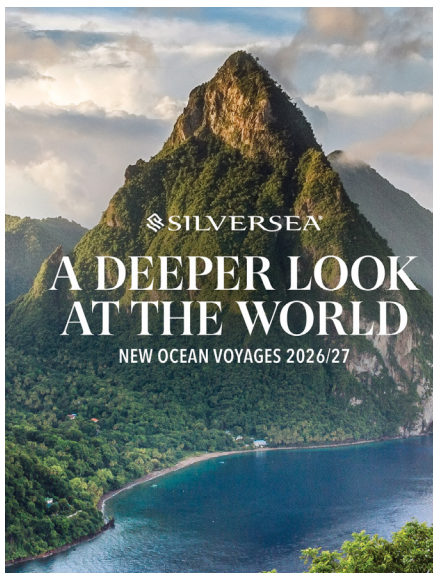
### TONIGHT'S SHOW WITH SHIMI GOODMAN

AT 9:15 PM  
VENETIAN LOUNGE, DECK 5

Shimi was born in Tel Aviv, Israel and currently lives in London, England. He received a BA Honours in Musical Theatre from Guildford School of Acting. He has performed extensively in the West End and in some of the most prestigious venues around the world entertaining royalty and Heads of States. He has been described by the press as "a true triple threat" and a recent critic said "His range is exceptional and brought me to my feet".

## OTIVM

### THE ORIGINAL ART OF COMFORT



## BLACKJACK TOURNAMENT



3:00 PM  
CASINO, DECK 7

Come to the Casino and join our Blackjack Tournament.

Visit the Casino on board and try your championship skills! Whether you are a new player or a Blackjack veteran, taking part in Blackjack Tournaments can be a lot of fun! An entry fee is applicable. Ask our Casino staff for more information. Have fun and good luck!

## NEWSPAPER STREAMING



Silversea is proud to offer a newspaper streaming library. Simply download the PressReader application to enjoy a wide variety of complimentary newspapers from around the world directly from your iPad/iPhone or an Android device.

To access please make sure you are on the Guest WiFi, then connect to [gopressreader.com](http://gopressreader.com). No internet charges apply. If you need assistance connecting, please contact your Butler or Reception.

1. Connect to WiFi and login to the internet.
2. Download the PressReader app from the App Store
3. Type: "gopressreader.com" in your web browser
4. Tap "Use local PressReader server"

## ONBOARD MOVIES



Discover on MyCruise Interactive TV our full selection of movies and documentaries. Relax in the comfort of your suite and enjoy the new movies available at the latest releases section. We also have genre-specific lists for action, comedy, fantasy, musical, romance and more. Straight out of Hollywood and fresh from the theater, find out what's new, popular and available.

# Friday, 17 January 2025

## GOOD MORNING

7:00	Morning Stretch (sign up required)	Fitness Centre (6)
8:00	Pure form Pilates (sign up required)	Fitness Centre (6)
9:00	Today's Silver Quiz, Crossword Puzzle and Sudoku are available (Return the Silver Quiz to Reception by 3:00 pm - prize points for the most accurate quiz that is returned earliest)	Arts Café (8)
9:00	Board games will be available for your enjoyment (unhosted)	Observation Lounge (11)
9:00	Shuffleboard will be set up for your enjoyment throughout the day (unhosted) * weather permitting	Outside Panorama Lounge (9)
9:00	5 Minutes makeover	OTIVM Spa (6)
9:15	<b>Shore Concierge General Briefing in China:</b> with Shore Concierge Manager Maria	Venetian Lounge (5)
9:30	<b>S.A.L.T. Lab Class: "Japanese Farm Food: An Unsung Side of Japanese Cuisine"</b> (please pre-register with guest services)	S.A.L.T. Lab (4)
9:30	Knitting Group: meet with fellow knitters and stitcher (unhosted, no material provided)	Observation Lounge (11)
9:45	<b>Destination Lecture with Evelyn Evans - Hiroshima:</b> The site of the devastating first strike of an atomic bomb as an act of war, Hiroshima's Peace Park is now a place of reflection - its skeletal domed building a stark reminder of the futility of war and the 100,000 who died. The museum is an essential destination. Miyajima, a short ferry ride away is the site of the famous red Torii Gate situated in the sea opposite Hiroshima	Venetian Lounge (5)
10:00	Facial Rejuvenation walkin clinic with Dr. Marco (complimentary consultation)	OTIVM Spa (6)
10:00	Coffee Chat with your Entertainment Cruise Staff	Arts Café (8)
10:00	Bridge Beginners Play with your Bridge Instructors	Silver Note (7)
10:30	Acupuncture walkin clinic with Dr. Liliana (complimentary consultation)	OTIVM Spa (6)
10:30	Italian class: survival vocabulary and fun facts about Italy with your Assistant Cruise Director Denise	Dolce Vita (5)
10:30	"Boutique's Rolex watch preview & sign up booking. Reserve and book a limited Rolex time piece, join us today to find out more. Rolex watches are available to purchase onboard. Limited availability, make a reservation today	Boutique (8)
11:00	Shuffleboard Tournament: Join your Entertainment Cruise Staff for this daytime activity * weather permitting	Outside Panorama Lounge (9)
11:00	Intermediate Bridge with your Bridge Instructors	Silver Note (7)
11:00	<b>S.A.L.T. Culinary Talk &amp; Demonstration: Ramen</b> Join S.A.L.T. Host Drake Robertson S.A.L.T. Bartender Kris for a lively cooking demonstration	Venetian Lounge (5)
11:30	Cocktail Demonstration with our friendly Bar Team	Dolce Vita (5)
11:30	Mileage Pool: Join your Entertainment Cruise Staff in this daytime activity to guess how many miles we have travelled since Osaka	Arts Café (8)

## GOOD AFTERNOON

12:00	Nautical and weather information announcement by Captain Mino Pontillo	Live TV Channel 2 and Public Address System
1:45	Duplicate Bridge Play with your Bridge Instructors	Silver Note (7)
2:00	<b>Enrichment Lecture with Dr Robin Craig - Reach for the Stars:</b> Challenges in Space Exploration Explore the science of reaching beyond Earth. In this fascinating talk you will hear about the problems and solutions for getting into space, living in space, settling other worlds - and perhaps reaching the stars and beyond.	Venetian Lounge (5)
2:00	Improve your Posture with Goodfeet (complimentary consultation)	Fitness Centre (6)
2:00	<b>S.A.L.T. Lab Class: "Japanese Farm Food: An Unsung Side of Japanese Cuisine"</b> (please pre-register with guest services)	S.A.L.T. Lab (4)
2:00	Dance Class: Join your Gentlemen Hosts Brian and Jeff for this daytime activity	Panorama Lounge (9)
2:30	<b>Arts Class with Shelley Ocana: Gorgeous Bead Earrings</b> Come and discover your creative talents by designing beautiful glass bead earrings using the hues of Osaka's peaceful countryside.	Observation Lounge (11)
3:00	Play Blackjack Tournament with your friendly Casino Staff	Casino (7)
3:00	<b>Enrichment Lecture with John Stainton - Crikey what an Adventure</b> After achieving worldwide fame through his television and movies, Steve Irwin's career almost derailed through two unfortunate misadventures and then it regains its momentum only to be cut short by the tragedy on Batts Reef.	Venetian Lounge (5)
4:00	<b>Future Cruise Talk: New Voyages 2026 / 2027</b> with your Future Cruise Manager Barrie Dodgson Take your curiosity on the journey of a lifetime to discover the authentic beauty and endless wonder of our world	Venetian Lounge (5)
4:00	Arthities & Back pain solution with Dr. Liliana Grande	OTIVM Spa (6)
4:00	<b>Bingo!</b> with a member of the Entertainment Cruise Staff	Panorama Lounge (9)
4:00	How and why would you slice a diamond? From faceted to rough and from rare colors to colorless diamonds, our fascination with these beautiful gemstones is endless! Join Jean from Hubert Jewelry, for an informative chat to learn more about diamonds and the many forms they take.	Boutique (8)
4:30	Instant wrinkle solutions with Dr. Marco	OTIVM Spa (6)
4:45	<b>Team Trivia</b> - Join Cruise Director Moss for this daytime activity	Panorama Lounge (9)
5:00	Friends of Bill W. Meet (unhosted)	Observation Lounge (11)
5:30	Golf Putting Competition: Join your Entertainment Cruise Staff for this daytime activity	Lobby (4)
5:30	Catholic Mass with Father Adam	Silver Note (7)

## GOOD EVENING

## DRESS CODE: ELEGANT CASUAL

6:00	Shabbat Service with Rabbi David	Observation Lounge (11)
6:00	Pianist Remon and Guitar Entertainer Felipe alternate performing for guests' listening pleasure	Dolce Vita (5)
6:15	Silver Dawn Band plays for your listening pleasure	Panorama Lounge (9)
6:30	Solo Travellers get together with Gentlemen hosts Brian and Jeff	Dolce Vita (5)
7:30	Jazz Pianist André plays for guests' listening pleasure	Silver Note (7)
8:15	Join Silver Note Jazz Duo Esther and André as they entertain you with their live music	Silver Note (7)
9:00	Guitar Entertainer Felipe performs for guests' listening pleasure	Panorama Lounge (9)
9:00	Pianist Remon and Guitar Entertainer Felipe alternate performing for guests' listening pleasure (until late)	Dolce Vita (5)
9:15	<b>Showtime!</b> Silversea Proudly Presents <b>Headline Entertainer Shimi Goodman</b> International Tenor and West End Star A tenor and West End performer singing some of the world's most loved musical theatre hits and popular opera arias as well as songs from Andrea Bocelli to Ed Sheeran promising a highly entertaining evening.	Venetian Lounge (5)
10:15	DJ Gabor invites you to a party to celebrate the songs you love (until late)	Panorama Lounge (9)



# All Day Dining

## BREAKFAST

ATLANTIDE (DECK 4)

À la Carte 8:00 a.m. – Last Seating 9:30 a.m.

LA TERRAZZA (DECK 7)

Buffet 7:30 a.m. – 10:00 a.m.

## LUNCH

ATLANTIDE (DECK 4)

À la Carte 12:00 p.m. – Last Seating 1:30 p.m.

KAISEKI (DECK 4)

À la Carte 12:00 p.m. – Last Seating 2:30 p.m.

LA TERRAZZA (DECK 7)

Buffet 12:00 p.m. – 2:00 p.m.

THE GRILL (DECK 10) \*

À la Carte 12:00 p.m. – Last Seating 3:30 p.m.

## OPEN ALL DAY

ARTS CAFÉ (DECK 8)

Light Snacks 6:30 a.m. – 11:00 p.m.

SPACCANAPOLI (DECK 11)

À la Carte 11:00 a.m. – 11:00 p.m.

\* Weather permitting

\*\* Reservations required

## DINNER

*As a courtesy to your fellow guests please respect the times of your dinner reservation.*

ATLANTIDE (DECK 4)

À la Carte 6:00 p.m. – Last Seating 8:30 p.m.

S.A.L.T. Kitchen (DECK 4)

À la Carte 6:30 p.m. – Last Seating 9:00 p.m.

KAISEKI (DECK 4) \*\*

À la Carte 6:30 p.m. – Last Seating 9:00 p.m.

A dining fee per person applies

LA TERRAZZA (DECK 7) \*\*

À la Carte 6:30 p.m. – Last Seating 9:00 p.m.

SILVER NOTE (DECK 7) \*\*

À la Carte 7:30 p.m. – Last Seating 10:00 p.m.

THE GRILL (DECK 10) \*/\*\*

À la Carte 6:30 p.m. – Last Seating 9:00 p.m.

LA DAME (DECK 8) \*\*

À la Carte 6:30 p.m. – Last Seating 9:00 p.m.

Gentlemen: Jacket required

A dining fee per person applies

*Should you wish to cancel your reservation at La Dame, please note that you must do so by latest 2:00pm on the day of the reservation, otherwise the full cover fee per person will be billed to your Guest Account.*

## IN-SUITE DINING

24-hour

The menu is available on the TV.

To place your order please contact your butler or call extension 500. In-Suite Dining is also available in other public areas when our dining venues are not open for service.

*At Silversea Cruises, we take maximum food precautionary measures to ensure the safest quality product is offered to our guests; Worldwide Public Health Services advise that consuming raw or undercooked meats, seafood, shellfish, eggs, milk, or poultry may increase your risk of food-borne illness, especially if you have certain medical conditions.*

## BAR HOURS

9:00am – 10:30pm

10:00am – 8:00pm

9:00pm - until late

2:00pm – until late

6:00pm – until late

6:30am – until late

6:00pm – 11:00pm

7:00pm – until late

9:00pm – until late

\*Weather permitting

Pool Bar \* [ Deck 10 ]

Panorama Lounge [ Deck 9 ]

Dolce Vita [ Deck 5 ]

S.A.L.T. Bar [ Deck 4 ]

Arts Café [ Deck 8 ]

Observation Library [ Deck 11 ]

Silver Note [ Deck 7 ]

Connoisseur's Corner [ Deck 9 ]

# SERVICES

## OTIVM SPA | DECK 6

### BEAUTY SALON AND BARBER SHOP

Dial 600 for appointments.

8:00 a.m. – 8:00 p.m.

*Later appointments until 10:00 p.m. available on request.*

## SAUNA & STEAM ROOM | DECK 6

8:00 a.m. – 8:00 p.m.

## FITNESS CENTRE | DECK 6

5:00 a.m. – 10:00 p.m.

*Limited spaces available for classes.*

*Age restriction: over 18 to use the facilities. 16–18 allowed in with guardian.*

## FUTURE CRUISE SALES | DECK 5

Please dial 60515 or consult your suite ITV to request an appointment.

8:00 a.m. – 12:00 p.m. | 2:00 p.m. – 6:00 p.m.

## BOUTIQUES | DECK 8

10:00 a.m. – 10:00 p.m.

*Toiletries and other essential items are available for purchase upon request in the Boutique or through your Butler.*

*Dial 555 (Reception) for assistance.*

## CASINO | DECK 7

Slots: All day

Tables: 2:00 p.m. – 6:00 p.m.

9:00 p.m. – until late

*Age restriction: over 18 to use the facilities.*

## SHORE CONCIERGE DESK | DECK 5

Dial 551 for assistance

during daily opening hours.

9:00 a.m. - 12:00 p.m. | 3:00 p.m. - 7:00 p.m.

## GUEST RELATIONS MANAGER | DECK 5

Dial 60502 for assistance.

8:00 a.m. – 12:00 p.m. | 4:00 p.m. – 8:00 p.m.

## MEDICAL CENTRE | DECK 3

Dial 10333 during clinic hours.

9:30 a.m. – 11:00 a.m. | 4:00 p.m. – 5:30 p.m.

Medical assistance is also available by appointment.

Dial 555 (Reception) after hours.

*Emergency service is available 24 hours a day. Please use the Forward elevator or Forward stairs to reach the clinic.*

Kindly ask about charges prior to consultation.

## RESERVING DECK CHAIRS

Kindly note deck chairs cannot be reserved. When you leave your sun chair for long periods, please take your books, lotion or other items with you in order that other guests may use the deck chairs. Unattended items on the chairs will be removed by our personnel after approximately one hour and sent to reception (lost & found). Thank you for your cooperation in this matter. Guests who need assistance with deck chairs, may contact the pool bartender.

**IN THE EVENT OF AN  
EMERGENCY PLEASE DIAL 999**