

# Chronicles

**SUNDAY, 16 FEBRUARY 2025**

HAMBANTOTA, SRI LANKA

**Arrival:** 4:00 a.m.

**All Aboard:** 6:30 p.m.

**Departure:** 7:00 p.m.

**DRESS CODE: ELEGANT CASUAL**

Ladies: trousers, blouses, skirts, or casual dresses.

Gents: open-collar shirts and slacks, jacket optional.

No jeans, shorts or flip flop type footwear after 6:00 P.M. in indoor venues.

**TODAY'S WEATHER**

*Sunny*

**High:** 84°F 29°C

**Low:** 74°F 23°C



## HAMBANTOTA, SRI LANKA

*Aboard Silver Dawn*

# PLAN AHEAD

## Upcoming ports



DATE	PORT	ARRIVE	DEPART
17 Feb	Colombo	8:00 a.m.	11:00 p.m.
18 Feb	Day at Sea	-	-
19 Feb	Male	8:00 a.m.	7:00 p.m.

## YOUR EXPERIENCES ASHORE

### SHORE EXCURSION SUGGESTIONS

Enhance your voyage with our exceptional excursions. From day excursions or private arrangements, we offer you the world. Please visit the Shore Concierge Desk to discuss your options and reserve your excursions. If you prefer, you may request your excursions via MyCruise on your in-suite TV or by completing the Excursion Booking Form in your suite. Your butler will be pleased to deliver this if completed by our deadline.

#### CMB-C / The Temple of Kelaniya & Souvenirs

4.00 Hours | \$59

Explore the religious, cultural and artistic influences of Sri Lanka during this memorable, half-day visit to the Kelaniya Temple, with a shopping stop in Colombo.

#### CMB-H / Sights of Colombo & High Tea Experience

8.50 Hours | \$89

Colombo, capital and major port of Sri Lanka, is a fascinating city that links the past with the present. Its tangible history is a unique mix of relics of Portuguese, Dutch and English settlement, blended with Indian influences.

DECK 5 EXT. 551

OPENING HOURS:

7:30 A.M. - 10:30 A.M. | 4:00 P.M. - 7:00 P.M.



## HAMBANTOTA, SRI LANKA

### *Gateway to Sri Lanka is rich in resources*

Far to the south of Sri Lanka is the city of Hambantota with a colorful and storied traditional Ruhuna past and great promise for the future.

This gateway to Sri Lanka is rich in resources and since being upset by the 2004 Indian Ocean Tsunami, has put great emphasis on rebuilding and moving progressively into a central role in the development of the southern region of Sri Lanka.

Traditionally an agricultural area, the region is also known for having some of the country's most skilled jewelers and crafts people. The bazaar or 'pola' is a popular market place where locals sell produce, goods, and fish.

### SIGHTS

- Kataragama
- MulKirigala Rock Temple
- Yala National Park
- Mahapelessa Hot Springs
- Ussangoda National Park
- Birds Research Centre And Resort
- Mirijawila Botanic Garden
- Agro Technology Park
- Ramba Viharaya
- Sithulpawwa Buddhist Monastery

### SHOPPING

For those interested in shopping, Hambantota offers many options that capture the essence of Sri Lanka. The local market, generally buzzing with activity, is a great place to immerse yourself in the daily life of the community. Here, you can find fresh produce, spices, and traditional Sri Lankan snacks.

On the other hand, souvenir shops around the city offer crafted goods that showcase local artistry. From intricately designed textiles to hand-carved wooden artifacts and traditional jewelry, these shops provide an array of items that make for meaningful keepsakes or gifts.

Whether you're looking for something simple or something special, Hambantota's shopping venues give you the opportunity to take home a piece of Sri Lanka's rich culture.

# RESPOKE

GET FASHION THAT FEELS GOOD WITH RESPOKE

▶ THE BOUTIQUE  
DECK 8

Discover chic fashion accessories made from beautiful silk scarves by some of fashion's greatest designers. All are made with natural fibers and environmentally friendly materials (and no leather); plus, Respoke pays a fair wage to its craftspeople, who work in family owned workshops.



# THE EMPEROR'S CHAIR

ALL-ENCOMPASSING GROOMING RITUAL

▶ THE OTIVM BEAUTY SPA  
DECK 6

Command a room after experiencing this all-encompassing grooming ritual known as the shave of all shaves. Join a group of legends who embrace a double-close shave, scalp, face, hand and arm massage. Includes an eyebrow trim, and warm neck wrap.



# YOUR GUEST MEAL IS OUR TREAT

Enhance your dining experience with our exclusive offer at La Dame and Kaiseki.

Enjoy a memorable meal with your guest on us. Savor exceptional cuisine and impeccable service, making your evening truly special.

Take advantage of this offer today for the 16<sup>th</sup> February and only for reservation on that day.



# DELUXE WINE SET

A TASTING ADVENTURE WELL BEYOND WORDS

Unleash your inner wine enthusiast and embark on a sensory journey like no other with our exclusive selection of three premium wines from our Connoisseurs Wine list. Let our Head Sommelier be your guide as you explore the nuances and flavors of these exceptional wines. For more information on our Connoisseurs Wine Packages, reach out to our Head Sommelier.

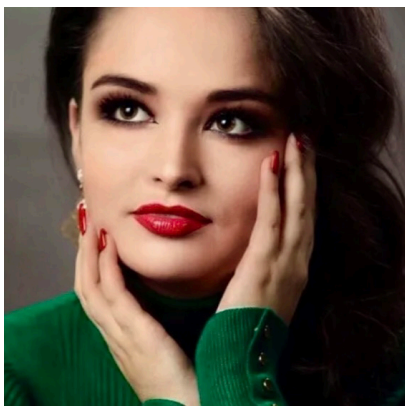


# GLITTER AND BE GAY

SHOWTIME WITH HEADLINE ENTERTAINER MARY MCCABE

▶ AT: 9:30 P.M., VENETIAN LOUNGE, DECK 5

Mary McCabe is a soprano hailing from Downpatrick, Northern Ireland. Mary has been connected with Northern Ireland Opera since its inception, beginning as a Young Artist and later an Associate Artist. Enjoy tonight's show: Featuring popular opera arias, musical theatre & art songs.



# SAVE UP TO \$6,000

Take advantage of our Up to \$5,000 Reasons to Sail offer plus additional savings of \$1,000 for combined savings of up to \$6,000 per suite\*.

This offer is exclusively available on our Door-to-Door and Port-to-Port all-inclusive fares, featuring over 300 voyages – departing early 2025 through 2027. From ocean-going journeys to the British Isles and the Caribbean to immersive expedition voyages exploring Antarctica, French Polynesia, and beyond, enjoy this exceptional offer and join us for the experience of a lifetime.

To take advantage of this limited-time offer, book your suite with just a 15% deposit by February 28, 2025.

Book onboard and combine this offer with exclusive 5% onboard savings!



▶ For more information, please contact your Future Cruise Team Barrie and Lauren on Deck 5, or extension 60515.

# ONBOARD MOVIES



Discover on MyCruise Interactive TV our full selection of movies and documentaries. Relax in the comfort of your suite and enjoy the new movies available at the latest releases section. We also have genre-specific lists for action, comedy, fantasy, musical, romance and more. Straight out of Hollywood and fresh from the theater, find out what's new, popular and available.



## ALL DAY DINING

### BREAKFAST

ATLANTIDE (DECK 4)

À la Carte 8:00 a.m. – Last Seating 9:30 a.m.

LA TERRAZZA (DECK 7)

Buffet 7:00 a.m. – 10:00 a.m.

### LUNCH

ATLANTIDE (DECK 4)

À la Carte 12:00 p.m. – Last Seating 1:30 p.m.

KAISEKI (DECK 4)

À la Carte 12:00 p.m. – Last Seating 2:30 p.m.

LA TERRAZZA (DECK 7)

Buffet 12:00 p.m. – 2:00 p.m.

THE GRILL (DECK 10) \*

À la Carte 12:00 p.m. – Last Seating 3:30 p.m.

### OPEN ALL DAY

ARTS CAFÉ (DECK 8)

Light Snacks 6:30 a.m. – 11:00 p.m.

SPACCANAPOLI (DECK 11)

À la Carte 11:00 a.m. – 11:00 p.m.

\* Weather permitting

\*\* Reservations required

### IN-SUITE DINING

24-hour

The menu is available on the TV.

To place your order please contact your butler or call extension 500. In-Suite Dining is also available in other public areas when our dining venues are not open for service.

At Silversea Cruises, we take maximum food precautionary measures to ensure the safest quality product is offered to our guests; Worldwide Public Health Services advise that consuming raw or undercooked meats, seafood, shellfish, eggs, milk, or poultry may increase your risk of food-borne illness, especially if you have certain medical conditions.

### HAND WASHING & HAND SANITIZING

Keeping hands clean through improved hand hygiene is one of the most important steps we can take to avoid getting sick and spreading germs to others. Many diseases and conditions are spread by not washing hands with soap and clean running water. Alcohol-based hand sanitizers can quickly reduce the number of germs on hands. Please use the hand sanitizers situated at the entrance door of the dining outlets and various locations around the ship.

### DINNER

*As a courtesy to your fellow guests please respect the times of your dinner reservation.*

ATLANTIDE (DECK 4)

À la Carte 6:00 p.m. – Last Seating 8:30 p.m.

S.A.L.T. Kitchen (DECK 4)

À la Carte 6:30 p.m. – Last Seating 9:00 p.m.

KAISEKI (DECK 4) \*\*

À la Carte 6:30 p.m. – Last Seating 9:00 p.m.

A dining fee per person applies

LA TERRAZZA (DECK 7) \*\*

À la Carte 6:30 p.m. – Last Seating 9:00 p.m.

SILVER NOTE (DECK 7) \*\*

À la Carte 7:30 p.m. – Last Seating 10:00 p.m.

THE GRILL (DECK 10) \*/\*\*

À la Carte 6:30 p.m. – Last Seating 9:00 p.m.

LA DAME (DECK 8) \*\*

À la Carte 6:30 p.m. – Last Seating 9:00 p.m.

Gentlemen: Jacket required

A dining fee per person applies

*Should you wish to cancel your reservation at La Dame, please note that you must do so by latest 2:00pm on the day of the reservation, otherwise the full cover fee per person will be billed to your Guest Account.*

### BAR HOURS

9:00am – 10:30pm

10:00am – until late

2:00pm – until late

6:00pm – until late

6:30am – until late

6:00pm – 11:00pm

7:00pm – until late

9:00pm – until late

\*Weather permitting

Pool Bar \* [ Deck 10 ]

Panorama Lounge [ Deck 9 ]

Dolce Vita [ Deck 5 ]

S.A.L.T. Bar [ Deck 4 ]

Arts Café [ Deck 8 ]

Observation Library [ Deck 11 ]

Silver Note [ Deck 7 ]

Connoisseur's Corner [ Deck 9 ]

## SERVICES

### OTIVM SPA | DECK 6

#### BEAUTY SALON AND BARBER SHOP

Dial 600 for appointments.

8:00 a.m. – 8:00 p.m.

*Later appointments until 10:00 p.m. available on request.*

### SAUNA & STEAM ROOM | DECK 6

8:00 a.m. – 8:00 p.m.

### FITNESS CENTRE | DECK 6

5:00 a.m. – 10:00 p.m.

*Limited spaces available for classes.*

*Age restriction: over 18 to use the*

*facilities. 16–18 allowed in with guardian.*

### FUTURE CRUISE SALES | DECK 5

Please dial 60515 or consult your suite ITV to request an appointment.

8:00 a.m. – 11:00 a.m. | 3:00 p.m. – 8:00 p.m.

### BOUTIQUES | DECK 8

7:00 p.m. – 11:00 p.m.

Window gallery pop up boutique

open all day for preview and viewing.

### CASINO | DECK 7

Slots: 8:00 p.m. – until late

Tables: 8:00 p.m. – until late

*Age restriction: over 18 to use the facilities.*

### SHORE CONCIERGE DESK | DECK 5

Dial 551 for assistance during daily opening hours.

7:30 a.m. – 10:30 a.m. | 4:00 p.m. – 7:00 p.m.

### GUEST RELATIONS MANAGER | DECK 5

Dial 60502 for assistance.

8:00 a.m. – 12:00 p.m. | 3:00 p.m. – 7:00 p.m.

### MEDICAL CENTRE | DECK 3

Dial 10333 during clinic hours.

8:00 a.m. – 9:00 a.m. | 5:00 p.m. – 6:00 p.m.

Medical assistance is also available by appointment.

Dial 555 (Reception) after hours.

*Emergency service is available 24 hours a day.*

*Please use the Forward elevator or Forward stairs to reach the clinic.*

Kindly ask about charges prior to consultation.

**IN THE EVENT OF AN EMERGENCY PLEASE DIAL 999**

# Sunday, 16 February 2025

Sunrise 6:21 a.m. • Sunset 6:17 p.m.

## GOOD MORNING

4:00	<b>Silver Dawn is scheduled to dock in Hambantota, Sri Lanka</b> Once the vessel has been cleared by local authorities, Cruise Director Moss will give weather and gangway location information (Clearance announcements are broadcast on Bridge camera channel on your suite television)	
9:00	Today's Silver Quiz, Crossword Puzzle and Sudoku are available (Return the Silver Quiz to Reception by 3:00 pm - prize points for the most accurate quiz that is returned earliest)	Arts Café (8)
9:00	Board games will be available for your enjoyment (unhosted)	Observation Lounge (11)
9:00	Shuffleboard will be set up for your enjoyment throughout the day (unhosted) * weather permitting	Outside Panorama Lounge (9)
9:00	Puffy eyes seminar	OTIVM Spa (6)
9:30	Knit and Stitch Club: meet with fellow knitters and stitchers (unhosted, no material provided)	Observation Lounge (11)
10:00	Table Tennis will be available for your enjoyment (unhosted) * weather permitting	Outside Panorama Lounge (9)
10:30	Complimentary massage taster	OTIVM Spa (6)

## GOOD AFTERNOON

3:00	Acupuncture Q&A with Dr. Liliana Grande	OTIVM Spa (6)
3:00	<b>S.A.L.T. Lab Class: "Bread With a Side of Beethoven: The Story of a Sri Lankan Icon"</b> (please pre-register with guest services)	S.A.L.T. Lab (4)
3:30	<b>Destination Lecture with Evelyn Evans - Colombo:</b> The colonial capital of what was Ceylon from 1815, Colombo has a wealth of historic buildings and monuments mixed with modern, vibrant architecture. Gateway to 8 UNESCO World Heritage sites, there is much to see and wonderful food to enjoy.	Venetian Lounge (5)
4:00	<b>Bingo!</b> with a member of the Entertainment Cruise Staff	Panorama Lounge (9)
4:00	Restore Facial Contour with Dr. Marco	OTIVM Spa (6)
4:45	<b>Team Trivia</b> - Join Cruise Director Moss for this daytime activity	Dolce Vita (5)
5:00	Pathway to Pilates (sign up required)	Fitness Centre (6)
5:00	Catholic Mass with Father Adam	Silver Note (7)
5:30	Fab Abs (sign up required)	Fitness Centre (6)
5:30	LGBTQ+ Get Together (unhosted)	Panorama Lounge (9)
5:30	Golf Putting Competition: Join your Entertainment Cruise Staff for this daytime activity	Lobby (4)

## GOOD EVENING

**DRESS CODE: ELEGANT CASUAL**

6:00	Guitar Entertainer Felipe and Pianist Remon alternate performing for guests' listening pleasure	Dolce Vita (5)
6:15	Silver Dawn Band plays for your dancing and listening pleasure	Panorama Lounge (9)
6:30	<b>All Aboard! Silver Dawn prepares to sail</b>	
6:30	Solo Travellers get together with Gentlemen hosts Brian and Jeff	Panorama Lounge (9)
7:00	<b>Silver Dawn sails for Colombo, Sri Lanka</b>	
7:30	Jazz Pianist André plays for guests' listening pleasure	Silver Note (7)
8:15	Join Silver Note Jazz Duo Esther and André as they entertain you with their live music	Silver Note (7)
9:00	On Sale Respoke get Fashion that Feels Good with Respoke: Discover chic fashion accessories made from beautiful silk scarves by some of fashion's greatest designers.	Boutique (8)
9:00	Guitar Entertainer Felipe and Pianist Remon alternate performing for guests' listening pleasure	Dolce Vita (5)
9:00	Silver Dawn Band plays for your dancing and listening pleasure	Panorama Lounge (9)
9:30	<b>Showtime!</b> Silversea Proudly Presents: <b>Headline Entertainer Mary McCabe – Glitter and be Gay</b> Featuring popular opera arias, musical theatre & art songs	Venetian Lounge (5)
10:15	DJ Gabor invites you to a party to celebrate the songs you love (until late)	Panorama Lounge (9)

# Going ashore in Hambantota, *Sri Lanka*

## SHIP PROCEDURES

Remember to carry your **Suite Key Card and a Digital Copy of your Passport** (a photo on your mobile device is sufficient) whenever going ashore as this is your only valid identification for reboarding the vessel.

## PIER INFORMATION

*Silver Dawn* is scheduled to dock in Hambantota International Port.

## IMPORTANT NOTICE

Silversea charges in United States Dollars for all shipboard transactions. We would like you to be aware that your credit card company may charge a foreign transaction fee. Silversea processes shipboard credit card transactions through the United Kingdom. Should you wish to register a different credit card to settle your account, please see our Reception Staff on Deck 5.

## CURRENCY EXCHANGE

The local currency is Sri Lankan Rupees (LKR). Guests going ashore can expect the following rates of exchange:

**1 USD = 297.52 LKR approx.**

**1 EUR = 370.34 LKR approx.**

**1 GBP = 308.27 LKR approx.**

## SHIP'S AGENT

(for use in emergencies only)

Colombo Shipping Solutions (PVT) LTD

Mob: +94 771 7667694

## EXCURSIONS

The excursions depart at the times listed below from the pier ashore. As a courtesy to your fellow guests and to allow the punctual departure of your excursion, we ask all participants to proceed ashore **10 minutes** prior to your departure time. If you are late, unfortunately the transportation will not wait.

**Please do not forget to bring your excursion tickets, Suite Key Card and a Digital Copy of your Passport.**

HMB-C	A MORNING AT THE UDawalawe NATIONAL PARK WITH BREAKFAST .....	4:30 a.m.
HMB-E	YALA NATIONAL PARK WITH BREAKFAST.....	4:30 a.m.
HMB-A	SRI LANKAN TEMPLES & WILDLIFE.....	8:00 a.m.
HMB-G	MULKIRIGALA: TEMPLE OF THE GREAT KINGS .....	8:00 a.m.
HMB-H	A DAY AT THE UDawalawe NATIONAL PARK WITH LUNCH .....	8:00 a.m.
HMB-B	THE SACRED CITY OF KATARAGAMA .....	8:15 a.m.
HMB-D	YALA NATIONAL PARK WITH LUNCH .....	11:30 a.m.

## HOSPITALITY DESK

There will be a Hospitality Desk available onboard for two hours in the morning. The hospitality representative will be able to answer detailed questions and to direct guests to their desired locations. Complimentary brochures and maps may also be available.

A currency exchange counter can be made available at the pier via Port Agent

## SHUTTLE BUS

Please note we will have no shuttle bus into town due to a strong Taxi union.

## VESSEL GENERAL PERMIT

Silversea is committed to protecting the environment and has a responsibility to ensure that the waterways on which it sails on are not polluted by the fleet. Therefore, we ask for your cooperation in helping us to enforce this policy. Please do not throw anything overboard at any time and minimize the usage of water. Be mindful of detergents and soaps used onboard. May we request that you use water sensibly by turning off faucets / taps and showers and do not allow them to run continuously. Please report any possible situations that could cause pollution to the seas to the Reception Desk on Deck 5 or by calling 555 on any of the ship's telephones. Thank you for your cooperation.

## HAND WASHING & HAND SANITIZING

Keeping hands clean through improved hand hygiene is one of the most important steps we can take to avoid getting sick and spreading germs to others. Many diseases and conditions spread by not washing hands with soap and clean, running water. Alcohol-based hand sanitizers can quickly reduce the number of germs on hands. Please use the hand sanitizers situated at the entrance door of the dining outlets and various locations around the ship.

---

**PLEASE NOTE THIS USEFUL INFORMATION WHEN GOING ASHORE.**  
**SILVER DAWN SATELLITE PHONE NUMBER: +1 786 605 5750**

*All Aboard*  
*6:30 p.m.*