

Chronicles

News and Information for all onboard events

WEDNESDAY, 12 FEBRUARY 2025

EN ROUTE TO TRINCOMALEE,
SRI LANKA

DRESS CODE: ELEGANT CASUAL

For Ladies: may opt for trousers, blouses, skirts, or casual dresses.
For Gentlemen: can wear open-collar shirts and slacks. A jacket is optional. No jeans, shorts or flip flop type footwear after 6:00 P.M. in indoor venues.

TODAY'S WEATHER

Mostly sunny

High: 81°F 28°C

Low: 80°F 27°C



TIME CHANGE



Please turn your clocks
HALF HOUR BACK
during the night
between
12 and 13 February

AT SEA

Aboard Silver Dawn

MEDISPA COSMETIC TREATMENTS

REVITALISE YOUR APPEARANCE

▶ THE OTIVM BEAUTY SPA , DECK 6

Unlock the secret to a more youthful looking skin and body with our safe and effective cosmetic treatments available onboard. Revitalize your appearance in minutes with little, if any, downtime. The result: a renewed you. Contact the spa for a complimentary consultation.



HUBERT: DIAMOND CLEANING

THE ONBOARD BOUTIQUE

▶ 10:00 A.M. - 6:00 P.M., THE BOUTIQUE , DECK 8

Visit our jewellery specialist today in the Boutique for complimentary diamond cleaning from 10:00 a.m. to 6:00 p.m. All of Hubert's designs are tax and duty free and exempt from US customs charges. Ask in-store for details.



BLACKJACK TOURNAMENT

CASINO ON BOARD SILVERSEA

▶ AT 3:00 P.M., CASINO, DECK 7

Come to the Casino and join our Blackjack Tournament. Visit the Casino on board and try your championship skills! Whether you are a new player or a Blackjack veteran, taking part in Blackjack Tournaments can be a lot of fun!

What makes tournaments popular is the competition among players.

Unlike traditional Blackjack, where it is you against the dealer, in tournament play it is a player against player. An entry fee is applicable. Please ask our Casino Staff for more information. Have fun and good luck!



NEWSPAPER STREAMING

PRESSREADER APP

Silversea is proud to offer a newspaper streaming library. Simply download the PressReader application to enjoy a wide variety of complimentary newspapers from around the world directly from your iPad/iPhone or an Android device. To access please make sure you are on the Guest WiFi, then connect to gopressreader.com. No internet charges apply. If you need assistance connecting, please contact your Butler or the Reception Desk.

1. Connect to Guest WiFi and login to the internet.
2. Download the PressReader app from the App Store
3. Type: "gopressreader.com" on your web browser
4. Tap "Use local PressReader server"



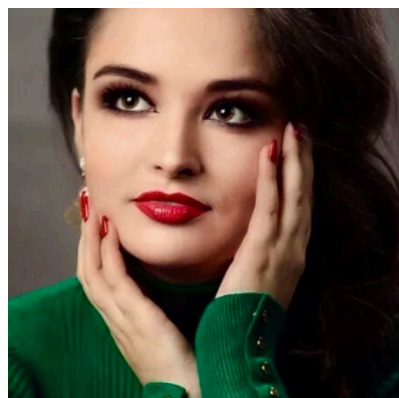
pressreader™

A NIGHT AT THE OPERA

SHOWTIME WITH HEADLINE ENTERTAINER MARY MCCABE

▶ AT 9:15 P.M., VENETIAN LOUNGE, DECK 5

Mary McCabe is a soprano hailing from Downpatrick, Northern Ireland. Mary has been connected with Northern Ireland Opera since its inception, beginning as a Young Artist and later an Associate Artist. Enjoy tonight's show: Chocolate box of popular opera arias & art songs



BENEFITS OF BOOKING YOUR NEXT CRUISE ON BOARD

If you are thinking about another cruise, there is no better time to book than while you are here on board. You'll enjoy an additional 5% onboard booking savings, combinable with your Venetian Society status. This means that you can save up to 10% on selected sailing if you book today on board. The reservation is made on behalf of your travel agent or personal Cruise Consultant at Silversea.



▶ For more information, please contact your Future Cruise Team Barrie and Lauren on Deck 5, or extension 60515.

PREMIUM WINE TASTING

CHARDONNAY WINE FLIGHT



▶ 13 FEBRUARY, 2:15 P.M., LA DAME, DECK 8

There will be a presentation and tasting of our selected onboard wines on 13 February. Your Sommelier Team will be your host for this special event. As space is limited, please sign up at the Reception Desk or with Sommelier Team to make your reservations by 10:00 p.m. of 12 February. Should you wish to cancel your reservation for the wine tasting, please note that you must do so by the latest 13 February at 11:00 a.m., otherwise, the full wine tasting fee per person will be billed to your Guest Account.

A minimum of 7 guests for the event to take place. **A fee per person applies.**

The wines we will be featuring are:

- Domaine Jacques Prieur Puligny-Montrachet 1er Cru Les Combettes 2020
- Joseph Drouhin Chassagne-Montrachet 1er Cru Embazées 2022
- Angelo Gaja Gaia & Rey 2021
- Marchesi Antinori Cervaro della Sala 2022
- Cakebread Cellars Chardonnay 2021
- Far Niente Chardonnay 2022
- Leeuwin Estate Chardonnay Art Series 2020

Wednesday, 12 February 2025

NAVIGATIONAL BRIDGE TOUR SIGN UP

Guests wishing to visit the Navigational Bridge on 12 February please sign up at Reception, Deck 5 by the latest at noon, 12:00 p.m. on 12 February. Maximum of 20 guests. Subject to space availability and weather conditions. Taking photos and making videos are not allowed.

GOOD MORNING

7:00	Morning Stretch (sign up required)	Fitness Centre (6)
8:00	Pure Form Yoga (sign up required)	Fitness Centre (6)
9:00	Today's Silver Quiz, Crossword Puzzle and Sudoku are available (Return the Silver Quiz to Reception by 3:00 pm - prize points for the most accurate quiz that is returned earliest)	Arts Café (8)
9:00	Board games will be available for your enjoyment (unhosted)	Observation Lounge (11)
9:00	Shuffleboard will be set up for your enjoyment throughout the day (unhosted) * weather permitting	Outside Panorama Lounge (9)
9:00	Complimentary Sunglow Application With Our International Stylist	OTIVM Spa (6)
9:30	Knit and Stitch Club: meet with fellow knitters and stitchers (unhosted, no material provided)	Observation Lounge (11)
9:30	S.A.L.T. Lab Class: "Birth of a Nation's Food: The Cuisine of mid-20th Century Thailand" (please pre-register with guest services)	S.A.L.T. Lab (4)
9:45	Destination Lecture with Evelyn Evans - Trincomalee: on the island's north eastern coast, its bay is considered to be one of the finest natural harbours in the world. There are old Dutch Forts, Tamil Hindu Temples and access to the interior where elephants roam wild.	Venetian Lounge (5)
10:00	Facial Rejuvenation walk-in clinic with Dr. Marco	OTIVM Spa (6)
10:00	Table Tennis will be available for your enjoyment (unhosted) * weather permitting	Outside Panorama Lounge (9)
10:00	Bridge Beginners Play with your Bridge Instructors Brenda and Susan	Silver Note (7)
10:00	"Boutique Service:" Jewelry cleaning all day. Bedazzle your diamonds and gems for free with your expert Cromwell 3 items each guest only (until 6:00 p.m.)	Boutique (8)
10:30	Origami with your International Host Chris	Panorama Lounge (9)
11:00	Boat building competition material (till 11:30)	Dolce Vita (5)
11:00	Coffee Chat with your Entertainment Cruise Staff * weather permitting	Pool Deck (10)
11:00	Walk in comfort with Goodfeet	Fitness Centre (6)
11:00	Shuffleboard Tournament: Join your Entertainment Cruise Staff for this daytime activity * weather permitting	Outside Panorama Lounge (9)
11:00	Intermediate Bridge with your Bridge Instructors Brenda and Susan	Silver Note (7)
11:00	Mahjong Open session (supervised) with fellow guest Reeva	S.A.L.T. Kitchen (4)
11:15	S.A.L.T. Culinary Talk & Demonstration: Indonesia & The Spice Islands Join S.A.L.T. Host Drake Robertson and S.A.L.T. Bartender Kris for a lively cooking demonstration	Venetian Lounge (5)
11:30	Silversea First Time Guests Cocktail Reception , with entertainment by the Silversea Singers	Panorama Lounge (9)
11:30	Water Aerobics with members of the Entertainment Cruise Staff * weather permitting	Pool Deck (10)
11:30	Mileage Pool: Join your Entertainment Cruise Staff to guess how many miles we have travelled since noon yesterday * weather permitting	Pool Deck (10)

GOOD AFTERNOON

12:00	Nautical and weather information announcement by Captain Mino Pontillo	Live TV Channel 2 and Public Address System
1:45	Duplicate Bridge Play with your Bridge Instructors Brenda and Susan	Silver Note (7)
2:00	Enrichment Lecture with Sue Baic - Superfoods of South East Asia: can we eat ourselves young? Many traditional foods of SE Asia have become increasingly popular. Explore the latest research on foods from our cruise itinerary and their remarkable role in promoting health, helping us to age well no matter where we live.	Venetian Lounge (5)
2:00	Mahjong beginner with fellow guest Reeva - Lesson 3	S.A.L.T. Kitchen (4)
2:00	Dance Class: Join your Gentlemen Hosts Brian and Jeff for this daytime activity	Panorama Lounge (9)
2:30	Arts Class with Shelley Ocana: Beaded Earrings: Let's make beaded earrings using unique, imported glass beads mimicking the bright colors of the Indonesian Islands.	S.A.L.T. Kitchen (4)
2:30	Water Volleyball with members of the Entertainment Cruise Staff * weather permitting	Pool Deck (10)
3:00	Enrichment Lecture with Dr. Bill Timmins - Churchill and Stalin and their race for a nuclear weapon At the end of the Second World War Britain was almost bankrupt. Although it had collaborated in the Manhattan Project, the US had closed its doors on information transfer. Britain now had to produce a nuclear weapon on its own. It managed to do just that in a surprisingly short space of time and with limited resources. Meanwhile the US and UK believed it would take the Soviet Union at least ten years to build its first atomic bomb. However, they failed to account for its extensive network of spies in the US, UK and Canada!	Venetian Lounge (5)
3:00	Blackjack Tournament with your friendly Casino Staff	Casino (7)
3:00	Table Tennis Tournament: Join your Entertainment Cruise Staff for this daytime activity * weather permitting	Outside Panorama Lounge (9)
3:00	Instant wrinkle solutions with Dr. Marco	OTIVM Spa (6)
4:00	Enrichment Lecture with Mike Reiss - How I Write Comedy (and You Can Too)! Writing jokes for Johnny Carson, Joan Rivers, the Oscars... and The Pope! Really! A fun-filled look inside the world of the comedy writer.	Venetian Lounge (5)
4:00	Bingo! with a member of the Entertainment Cruise Staff	Panorama Lounge (9)
4:00	Three ways to feel better with acupuncture, herbs & cupping with Dr. Liliana	OTIVM Spa (6)
4:45	Team Trivia - Join Cruise Director Moss for this daytime activity	Dolce Vita (5)
5:00	Diamond chat- Hubert Diamonds, our fascination with these beautiful gemstones is endless! Join Jean, our guest gemstone expert for an informative chat to learn more about diamonds, the many forms they take and how to value them	Boutique (8)
5:00	Catholic Mass with Father Adam	Silver Note (7)
5:30	LGBTQ+ Get Together (unhosted)	Panorama Lounge (9)
5:30	Golf Putting Competition: Join your Entertainment Cruise Staff for this daytime activity	Lobby (4)
5:30	Evening Stretch (sign up required)	Fitness Centre (6)

GOOD EVENING

DRESS CODE: ELEGANT CASUAL

6:00	Pianist Remon and Guitar Entertainer Felipe alternate performing for guests' listening pleasure	Dolce Vita (5)
6:15	Silver Dawn Band plays for your listening pleasure	Panorama Lounge (9)
6:30	Solo Travellers get together with Gentlemen Hosts Brian and Jeff	Panorama Lounge (9)
7:30	Jazz Pianist André plays for guests' listening pleasure	Silver Note (7)
8:15	Join Silver Note Jazz Duo Esther and André as they entertain you with their live music	Silver Note (7)
9:00	Silver Dawn Band plays for your listening pleasure	Panorama Lounge (9)
9:00	Pianist Remon and Guitar Entertainer Felipe alternate performing for guests' listening pleasure	Dolce Vita (5)
9:15	Showtime! Silversea Proudly Presents: Headline Entertainer Mary McCabe - A Night at the Opera Chocolate box of popular opera arias & art songs	Venetian Lounge (5)
10:15	DJ Gabor invites you to a party to celebrate the songs you love (until late)	Panorama Lounge (9)



All Day Dining

BREAKFAST

ATLANTIDE (DECK 4)

À la Carte 8:00 a.m. – Last Seating 9:30 a.m.

LA TERRAZZA (DECK 7)

Buffet 7:30 a.m. – 10:00 a.m.

LUNCH

ATLANTIDE (DECK 4)

À la Carte 12:00 p.m. – Last Seating 1:30 p.m.

KAISEKI (DECK 4)

À la Carte 12:00 p.m. – Last Seating 2:30 p.m.

LA TERRAZZA (DECK 7)

Buffet 12:00 p.m. – 2:00 p.m.

THE GRILL (DECK 10) *

À la Carte 12:00 p.m. – Last Seating 3:30 p.m.

OPEN ALL DAY

ARTS CAFÉ (DECK 8)

Light Snacks 6:30 a.m. – 11:00 p.m.

SPACCANAPOLI (DECK 11)

À la Carte 11:00 a.m. – 11:00 p.m.

* Weather permitting

** Reservations required

DINNER

As a courtesy to your fellow guests please respect the times of your dinner reservation.

ATLANTIDE (DECK 4)

À la Carte 6:00 p.m. – Last Seating 8:30 p.m.

S.A.L.T. Kitchen (DECK 4)

À la Carte 6:30 p.m. – Last Seating 9:00 p.m.

KAISEKI (DECK 4) **

À la Carte 6:30 p.m. – Last Seating 9:00 p.m.

A dining fee per person applies

LA TERRAZZA (DECK 7) **

À la Carte 6:30 p.m. – Last Seating 9:00 p.m.

SILVER NOTE (DECK 7) **

À la Carte 7:30 p.m. – Last Seating 10:00 p.m.

THE GRILL (DECK 10) */**

À la Carte 6:30 p.m. – Last Seating 9:00 p.m.

LA DAME (DECK 8) **

À la Carte 6:30 p.m. – Last Seating 9:00 p.m.

Gentlemen: Jacket required

A dining fee per person applies

Should you wish to cancel your reservation at La Dame, please note that you must do so by latest 2:00pm on the day of the reservation, otherwise the full cover fee per person will be billed to your Guest Account.

BAR HOURS

9:00am – 10:30pm

10:00am – until late

2:00pm – until late

6:00pm – until late

6:30am – until late

6:00pm – 11:00pm

7:00pm – until late

9:00pm – until late

*Weather permitting

Pool Bar * [Deck 10]

Panorama Lounge [Deck 9]

Dolce Vita [Deck 5]

S.A.L.T. Bar [Deck 4]

Arts Café [Deck 8]

Observation Library [Deck 11]

Silver Note [Deck 7]

Connoisseur's Corner [Deck 9]

IN-SUITE DINING

24-hour

The menu is available on the TV.

To place your order please contact your butler or call extension 500. In-Suite Dining is also available in other public areas when our dining venues are not open for service.

At Silversea Cruises, we take maximum food precautionary measures to ensure the safest quality product is offered to our guests; Worldwide Public Health Services advise that consuming raw or undercooked meats, seafood, shellfish, eggs, milk, or poultry may increase your risk of food-borne illness, especially if you have certain medical conditions.

ONBOARD SMOKING POLICY

Smoking of cigarette, e-cigarette and vaporizer is permitted in the Connoisseur's Corner (inside and outside); at designated tables and seating outside the Panorama Lounge (starboard side) and on the Pool Deck (port side).

Smoking of cigars and pipes is allowed only in the Connoisseur's Corner (inside and outside).

Smoking is not allowed: In guest suites and guest suite verandas/balconies and inside all public areas, lounges and bars.

SERVICES

OTIVM SPA | DECK 6

BEAUTY SALON AND BARBER SHOP

Dial 600 for appointments.

8:00 a.m. – 8:00 p.m.

Later appointments until 10:00 p.m. available on request.

SAUNA & STEAM ROOM | DECK 6

8:00 a.m. – 8:00 p.m.

FITNESS CENTRE | DECK 6

5:00 a.m. – 10:00 p.m.

Limited spaces available for classes.

Age restriction: over 18 to use the facilities. 16–18 allowed in with guardian.

FUTURE CRUISE SALES | DECK 5

Please dial 60515 or consult your suite ITV to request an appointment.

8:00 a.m. – 11:00 a.m. | 2:00 p.m. – 7:00 p.m.

BOUTIQUES | DECK 8

10:00 a.m. – 10:00 p.m.

Toiletries and other essential items are available for purchase upon request in the Boutique or through your Butler.

Dial 555 (Reception) for assistance.

CASINO | DECK 7

Slots: All day

Tables: 2:00 p.m. – 6:00 p.m.

9:00 p.m. – until late

Age restriction: over 18 to use the facilities.

SHORE CONCIERGE DESK | DECK 5

Dial 551 for assistance

during daily opening hours.

9:00 a.m. - 12:00 p.m. | 3:00 p.m. - 7:00 p.m.

GUEST RELATIONS MANAGER | DECK 5

Dial 60502 for assistance.

8:00 a.m. – 12:00 p.m. | 4:00 p.m. – 8:00 p.m.

MEDICAL CENTRE | DECK 3

Dial 10333 during clinic hours.

9:30 a.m. – 11:00 a.m. | 4:00 p.m. – 5:30 p.m.

Medical assistance is also available by appointment.

Dial 555 (Reception) after hours.

Emergency service is available 24 hours a day. Please use the Forward elevator or Forward stairs to reach the clinic.

Kindly ask about charges prior to consultation.

IN THE EVENT OF AN EMERGENCY PLEASE DIAL 999