

Chronicles

News and  Information for all onboard events

SATURDAY, 8 MARCH 2025
PORT ELIZABETH, SOUTH AFRICA
Arrival: 8:00 a.m.
Overnight Stay

DRESS CODE: ELEGANT CASUAL

Ladies: trousers, blouses, skirts, or casual dresses.
Gents: open-collar shirts and slacks, jacket optional.
No jeans, shorts or flip flop type footwear after 6:00 P.M. in indoor venues.

TODAY'S WEATHER

Mostly sunny
High: 80°F 26°C
Low: 69°F 21°C



PORT ELIZABETH, SOUTH AFRICA

Aboard Silver Dawn

PLAN AHEAD

Upcoming ports



DATE	PORT	ARRIVE	DEPART
9 March	Port Elizabeth	-	10:00 p.m.
10 March	Day at Sea	-	-
11 March	Cape Town	7:00 a.m.	7:00 p.m.

YOUR EXPERIENCES ASHORE

SHORE EXCURSION SUGGESTIONS

Enhance your voyage with our exceptional excursions. From day excursions or private arrangements, we offer you the world. Please visit the Shore Concierge Desk to discuss your options and reserve your excursions. If you prefer, you may request your excursions via MyCruise on you in-suite TV or by completing the Excursion Booking Form in your suite. Your butler will be pleased to deliver this if completed by our deadline.

PLZ-O / Sibuya Private Game Reserve - Safari with River Boat Transfer & Lunch 9.50 Hours | \$349

Discover one of South Africa's most unique safari destinations during this unforgettable, full-day, game drive excursion with lunch at the beautiful Sibuya Private Game Reserve.

PLZ-P / Roseate Tern Trail Hike & Sanncoob with Lunch 8.00 Hours | \$709

Explore Port Elizabeth at your leisure during your full-day (8-Hour) sightseeing tour via private car. Customise your own itinerary or choose to see an overview of the area's highlights.

DECK 5 EXT. 551

OPENING HOURS:

7:30 A.M. - 10:30 A.M. | 5:00 P.M. - 7:00 P.M.



PORT ELIZABETH (GOEBERHA), SOUTH AFRICA

The Friendly City

Port Elizabeth, or PE is an uncut gem of a destination. Loved by wealthy South African families as a holiday destination, it is a city with two faces.

One: a natural haven with unspoiled beaches, rolling sand dunes and the warm Indian Ocean lapping at your feet and two: a post-industrial migrant city with a rich heritage. PE is also called Nelson Mandela Bay, and there is much here that celebrates him – starting with Route 67, a collection of 67 artworks honouring the 67 years that Mandela dedicated to achieving South Africa's freedom. Known as "the friendly city", Port Elizabeth is enjoying an urban regeneration, spurred on by the youth of the region that want to put it (back) on the map. Think vibrant creative projects spilling out wherever you go; a pedestrianised central zone, galleries selling local artworks, restaurants serving South African fusion food, award-winning buildings that house museums, restored Victorian terraces. Unsurprisingly, the boardwalk is buzzing. PE's proximity to the excellent nature parks at Addo and Lalibela make it an ideal destination for game lovers. Both of these parks are a little way from PE (70 and 90 kilometres east respectively) but both offer a chance to revel in South Africa's no holds barred natural beauty.

This is the real reason why people come to South Africa – for a chance to see the fabled Big Five. Addo even boasts the Big Seven (lion, elephant, rhino, buffalo and leopard, as well as the great white shark and Southern right whale).

SIGHTS

- Addo Elephant National Park
- Cape Recife Lighthouse Villa
- Donkin Reserve, Pyramid and Lighthouse
- Fort Frederick, Eastern Cape
- Kragga Kamma Game Park
- Kwantu Private Game Reserve
- Nelson Mandela Bay Stadium
- Nelson Mandela Metropolitan
- Art Museum
- Sardinia Bay Beach

CUISINE AND SHOPPING

Port Elizabeth has a diverse culinary scene with many local foods to try, including seafood, meat dishes, and baked goods. Locally grown oysters are a popular dish in Port Elizabeth. Biltong: A popular snack made from dried, cured, and spiced meat. Malva pudding: A sweet and sticky baked sponge pudding made with apricot jam and served with hot cream sauce.

There are plenty of places to shop in the Eastern Cape. From large shopping malls in Port Elizabeth to small boutique shops in Richmond Hill and country shops in the Gamtoos Valley there is a wide range of shopping in the Eastern Cape. Some of them are Greenacres, Baywest Mall, Walmer Park, Sunridge Village, MetLife Mall, Oceanside Surf Store, Pier 14, Moffet on Main Lifestyle Centre, Cleary Park.

PREMIUM WINE TASTING

RED OBSESSION

▶ 10 MARCH, 2:15 P.M., LA DAME, DECK 8

There will be a presentation and tasting of our selected onboard wines on 10 March. Your Sommelier Team will be your host for this special event. As space is limited, please sign up at the Reception Desk or with Sommelier Team to make your reservations by 10:00 a.m. of 9 March. Should you wish to cancel your reservation for the wine tasting, please note that you must do so by the latest 10 March at 11:00 a.m., otherwise, the full wine tasting fee per person will be billed to your Guest Account. A minimum of 7 guests for the event to take place. **A fee per person applies.**

The wines we will be featuring are:

- Château Mouton-Rothschild 1^{er} Cru Classé 2012
- Château Cheval Blanc 1^{er} Grand Cru Classé A 2011
- Château Haut-Brion 1^{er} Cru Classé 2014
- Château Latour 1^{er} Cru Classé 2008
- Château Margaux 1^{er} Cru Classé 2014
- Vega Sicilia Unico 2014



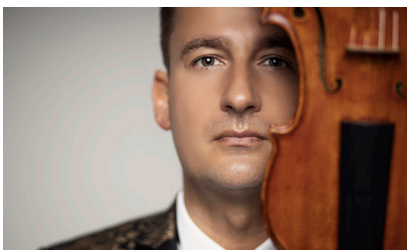
MAGIC OF THE VIOLIN

PRE-DINNER SHOW WITH AWARD WINNING

VIOLINIST : MICHAEL BACALA

▶ 6:15 P.M., VENETIAN LOUNGE, DECK 5

With passion, energy and humour an explosive performance of music from all over the world!



JOHN HARDY

BOUTIQUES AT SILVERSEA

▶ THE BOUTIQUE, DECK 8

Inspired by Bali and its time-honored jewellery-making traditions, Canadian artist John Hardy established an artisan collective in 1975 dedicated to creating one-of-a-kind jewellery and preserving the rich heritage



MAINTAINING A YOUTHFUL APPEARANCE

MEDI-SPA TREATMENTS

▶ THE OTIVM BEAUTY SPA, DECK 6

The Medi-Spa offers a variety of effective treatments to maintain a youthful looking appearance or address signs of aging on the face. Treatments include targeted wrinkle treatments and volumizing skin treatments to soften facial lines, wrinkles and folds. Now you can return home from your cruise vacation looking completely refreshed and youthful. Expect amazing results with no downtime.

OTIVM

THE ORIGINAL ART OF COMFORT

QHAMA AFRICA: MUSIC, DANCE, DRUMMING, AND MARIMBA

TONIGHT'S LOCAL SHOW

▶ AT 9:15 P.M.
▶ VENETIAN LOUNGE, DECK 5

The vibrant energy of Qhama Africa seamlessly blends music, dance, storytelling, drumming, and the rhythmic sounds of marimba. This is the story of a young man, who embarks on a quest to marry a woman from a rival tribe. Through love, passion, and perseverance, their story unfolds to unite their communities.



EXPLORE OUR 2026 OCEAN VOYAGE DESTINATIONS

163 VOYAGES
152 DESTINATIONS
33 COUNTRIES

Look closer at the world and you'll see every place reveals more than you expected: a clandestine past locked up in arches of brick and stone; a traditional recipe passed down from generation to generation; a burst of bright yellow and orange fall colours in the middle of an emerald forest.

Nobody gets you closer to these epic secrets than Silversea, as we take you behind the scenes of every destination.

Book onboard and receive exclusive 5% onboard savings!



For more information, please contact your Future Cruise Team Barrie and Lauren on Deck 5, or extension 60515.

YOUR GUEST MEAL IS OUR TREAT



Enhance your dining experience with our exclusive offer at La Dame and Kaiseki.

Enjoy a memorable meal with your guest on us. Savor exceptional cuisine and impeccable service, making your evening truly special.

Take advantage of this 2-for-1 offer today for the 8th March and only for reservation on that day. A dining fee per person applies.



ALL DAY DINING

BREAKFAST

ATLANTIDE (DECK 4)

À la Carte 8:00 a.m. – Last Seating 9:30 a.m.

LA TERRAZZA (DECK 7)

Buffet 7:00 a.m. – 10:00 a.m.

LUNCH

ATLANTIDE (DECK 4)

À la Carte 12:00 p.m. – Last Seating 1:30 p.m.

KAISEKI (DECK 4)

À la Carte 12:00 p.m. – Last Seating 2:30 p.m.

LA TERRAZZA (DECK 7)

Buffet 12:00 p.m. – 2:00 p.m.

THE GRILL (DECK 10) *

À la Carte 12:00 p.m. – Last Seating 3:30 p.m.

OPEN ALL DAY

ARTS CAFÉ (DECK 8)

Light Snacks 6:30 a.m. – 11:00 p.m.

SPACCANAPOLI (DECK 11)

À la Carte 11:00 a.m. – 11:00 p.m.

* Weather permitting

** Reservations required

IN-SUITE DINING

24-hour

The menu is available on the TV.

To place your order please contact your butler or call extension 500. In-Suite Dining is also available in other public areas when our dining venues are not open for service.

At Silversea Cruises, we take maximum food precautionary measures to ensure the safest quality product is offered to our guests; Worldwide Public Health Services advise that consuming raw or undercooked meats, seafood, shellfish, eggs, milk, or poultry may increase your risk of food-borne illness, especially if you have certain medical conditions.

STAY HEALTHY

Please help us to help you stay healthy by using Hand Sanitizer at the gangway before boarding the ship in each of the ports of call. Also take advantage of these Hand Sanitizers around the ship. Stay healthy and enjoy your cruise experience!

DINNER

As a courtesy to your fellow guests please respect the times of your dinner reservation.

ATLANTIDE (DECK 4)

À la Carte 6:00 p.m. – Last Seating 8:30 p.m.

S.A.L.T. Kitchen (DECK 4)

À la Carte 6:30 p.m. – Last Seating 9:00 p.m.

KAISEKI (DECK 4) **

À la Carte 6:30 p.m. – Last Seating 9:00 p.m.

A dining fee per person applies

LA TERRAZZA (DECK 7) **

À la Carte 6:30 p.m. – Last Seating 9:00 p.m.

SILVER NOTE (DECK 7) **

À la Carte 7:30 p.m. – Last Seating 10:00 p.m.

THE GRILL (DECK 10) */**

À la Carte 6:30 p.m. – Last Seating 9:00 p.m.

LA DAME (DECK 8) **

À la Carte 6:30 p.m. – Last Seating 9:00 p.m.

Gentlemen: Jacket required

A dining fee per person applies

Should you wish to cancel your reservation at La Dame, please note that you must do so by latest 2:00pm on the day of the reservation, otherwise the full cover fee per person will be billed to your Guest Account.

BAR HOURS

9:00am – 10:30pm

10:00am – until late

2:00pm – until late

6:00pm – until late

6:30am – until late

6:00pm – 11:00pm

7:00pm – until late

9:00pm – until late

*Weather permitting

Pool Bar * [Deck 10]

Panorama Lounge [Deck 9]

Dolce Vita [Deck 5]

S.A.L.T. Bar [Deck 4]

Arts Café [Deck 8]

Observation Library [Deck 11]

Silver Note [Deck 7]

Connoisseur's Corner [Deck 9]

SERVICES

OTIVM SPA | DECK 6

BEAUTY SALON AND BARBER SHOP

Dial 600 for appointments.

8:00 a.m. – 8:00 p.m.

Later appointments until 10:00 p.m. available on request.

SAUNA & STEAM ROOM | DECK 6

8:00 a.m. – 8:00 p.m.

FITNESS CENTRE | DECK 6

5:00 a.m. – 10:00 p.m.

Limited spaces available for classes.

Age restriction: over 18 to use the facilities. 16–18 allowed in with guardian.

FUTURE CRUISE SALES | DECK 5

Please dial 60515 or consult your suite ITV to request an appointment.

8:00 a.m. – 10:00 a.m. | 3:00 p.m. – 8:00 p.m.

BOUTIQUES | DECK 8

Closed due to Customs Regulations
Window gallery pop up boutique open all day for preview and viewing.

CASINO | DECK 7

Closed due to Customs Regulations
Age restriction: over 18 to use the facilities.

SHORE CONCIERGE DESK | DECK 5

Dial 551 for assistance during daily opening hours.
7:30 a.m. – 10:30 a.m. | 5:00 p.m. – 7:00 p.m.

GUEST RELATIONS MANAGER | DECK 5

Dial 60502 for assistance.
8:00 a.m. – 12:00 p.m. | 3:00 p.m. – 7:00 p.m.

MEDICAL CENTRE | DECK 3

Dial 10333 during clinic hours.
8:00 a.m. – 9:00 a.m. | 5:00 p.m. – 6:00 p.m.
Medical assistance is also available by appointment.
Dial 555 (Reception) after hours.
Emergency service is available 24 hours a day. Please use the Forward elevator or Forward stairs to reach the clinic.
Kindly ask about charges prior to consultation.

IN THE EVENT OF AN EMERGENCY PLEASE DIAL 999

Saturday, 8 March 2025

Sunrise 6:11 a.m. • Sunset 6:44 p.m.

GENERAL INFO FOR PORT ELIZABETH

There are no curfews during our overnight stay in Port Elizabeth. However, we strongly recommend avoiding walking outside the main port gate (Strand Street area), as there may be individuals in the vicinity who could target foreigners with valuables. For your safety and convenience, we would encourage guests to participate in an organized Silversea Shore Excursion. Furthermore, we are operating an shuttle service to a local mall. Venturing or taking a cab outside of the mall for further exploration is not recommended.

GOOD MORNING

8:00 **Silver Dawn is scheduled to dock in Port Elizabeth, South Africa and stay overnight**

Once the vessel has been cleared by local authorities, Cruise Director Moss will give weather and gangway location information

(Clearance announcements are broadcast on Bridge camera channel on your suite television)

9:00 Today's Silver Quiz, Crossword Puzzle and Sudoku are available Arts Café (8)

(Return the Silver Quiz to Reception by 3:00 pm - prize points for the most accurate quiz that is returned earliest)

9:00 Board games will be available for your enjoyment (unhosted) Observation Lounge (11)

9:00 Table Tennis will be available for your enjoyment (unhosted) * weather permitting Outside Panorama Lounge (9)

9:00 Shuffleboard will be set up for your enjoyment throughout the day (unhosted) * weather permitting Outside Panorama Lounge (9)

9:00 Cornhole will be available to play (unhosted) * weather permitting Outside Panorama Lounge (9)

9:30 Knit and Stitch Club: meet with fellow knitters and stitchers (unhosted, no material provided) Observation Lounge (11)

10:00 Reveal your skin secret with HD Elemis Camera OTIVM Spa (6)

10:30 Complimentary Sunglow Application With Our Skin Specialist OTIVM Spa (6)

GOOD AFTERNOON

4:00 Walk-in - clinic acupuncture pain relief OTIVM Spa (6)

4:00 **Bingo!** with a member of the Entertainment Cruise Staff Panorama Lounge (9)

4:00 Facial Rejuvenation walk-in clinic with Dr. Marco (complimentary consultation) OTIVM Spa (6)

4:45 **Team Trivia** - Join Cruise Director Moss for this daytime activity Dolce Vita (5)

5:00 Pure Form Yoga (sign up required) Fitness Centre (6)

5:30 Golf Putting Competition: Join your Entertainment Cruise Staff for this daytime activity Lobby (4)

GOOD EVENING

DRESS CODE: ELEGANT CASUAL

6:00 Evening stretch (sign up required) Fitness Centre (6)

6:00 Pianist Remon and Guitar Entertainer Felipe alternate performing for guests' listening pleasure Dolce Vita (5)

6:15 Silver Dawn Band plays for your dancing and listening pleasure Panorama Lounge (9)

6:15 **Pre-dinner Show!** Silversea Proudly Presents: **Award Winning Violinist Michael Bacala: Magic of the Violin** Venetian Lounge (5)

With passion, energy and humour an explosive performance of music from all over the world!

6:30 Solo Travellers get together with Gentleman Host Brian Panorama Lounge (9)

7:30 Jazz Pianist André plays for guests' listening pleasure Silver Note (7)

8:15 Join Silver Note Jazz Duo Esther and André as they entertain you with their live music Silver Note (7)

9:00 Silver Dawn Band plays for your dancing and listening pleasure Panorama Lounge (9)

9:00 Guitar Entertainer Felipe and Pianist Remon alternate performing for guests' listening pleasure Dolce Vita (5)

9:15 **Showtime!** Silversea Proudly Presents: **Local performance Qhama Africa** a vibrant fusion of music, dance, drumming, and marimba Venetian Lounge (5)

Qhama Africa tells the captivating story of a young man's quest to marry a woman from a rival tribe

10:15 DJ Gabor invites you to a party to celebrate the songs you love (until late) Panorama Lounge (9)

Going ashore in Port Elizabeth, *South Africa*

SHIP PROCEDURES

Remember to carry your **Suite Key Card and Original Passport** whenever going ashore as this is your only valid identification for reboarding the vessel.

PIER INFORMATION

Silver Dawn is scheduled to dock in Port Elizabeth (Gqeberha), BERTH 101.

IMPORTANT NOTICE

Silversea charges in United States Dollars for all shipboard transactions. We would like you to be aware that your credit card company may charge a foreign transaction fee. Silversea processes shipboard credit card transactions through the United Kingdom. Should you wish to register a different credit card to settle your account, please see our Reception Staff on Deck 5.

CURRENCY EXCHANGE

The local currency is South African Rand (ZAR).

Guests going ashore can expect the following rates of exchange:

1 USD = 18.23 ZAR approx.

1 EUR = 19.77 ZAR approx.

1 GBP = 23.54 ZAR approx.

SHIP'S AGENT

(for use in emergencies only)

RENNIES SHIPS AGENCY

Bidfreight Port Operations Building, Shed 10 & 11,

Mpt, Quay 3, Port Elizabeth, 6001

Email: plz@rennies.co.za

Phone: +27 83 460 1661

EXCURSIONS

The excursions depart at the times listed below from the pier ashore. As a courtesy to your fellow guests and to allow the punctual departure of your excursion, we ask all participants to proceed ashore **10 minutes** prior to your departure time. Please note there is a long walk through the crowded terminal to reach the tour buses. If you are late, unfortunately the transportation will not wait.

Please do not forget to bring your excursion tickets, Suite Key Card and your Original Passport.

PLZ-C	BELLEVUE FOREST - GIRAFFE & BUFFALO ENCOUNTER	8:30 a.m.
PLZ-J	AMAKHALA PRIVATE GAME RESERVE - SAFARI & LUNCH.....	8:30 a.m.
PLZ-O	SIBUYA PRIVATE GAME RESERVE - SAFARI WITH RIVER BOAT TRANSFER & LUNCH	8:30 a.m.
PLZ-E	1ST DEP: TOWNSHIP EXPLORATION - SOUTH AFRICA'S PAST & PRESENT	9:00 a.m.
PLZ-P	ROSEATE TERN TRAIL HIKE & SANCCOB WITH LUNCH	9:15 a.m.
PLZ-EA	2ND DEP: TOWNSHIP EXPLORATION - SOUTH AFRICA'S PAST & PRESENT	1:00 p.m.
01MIDPLZ-A	MID-VOYAGE LAND ADVENTURE: LALIBELA TREE TOPS TENTED CAMP & SAFARI EXPERIENCE.....	1:00 p.m.
01MIDPLZ-E	MID-VOYAGE LAND ADVENTURE: LALIBELA LENTABA SAFARI EXPERIENCE	1:00 p.m.
PLZ-D	SCHOTIA GAME RESERVE SUNSET SAFARI & DINNER	1:30 p.m.

HOSPITALITY DESK

There will be a Hospitality Desk available at the pier ashore from 09:00 a.m. - 11:00 a.m.. The hospitality representative will be able to answer detailed questions and to direct guests to their desired locations. Complimentary brochures and maps may also be available.

SHUTTLE BUS

A complimentary Shuttle Bus Service will be operating between the pier and Boardwalk Shopping Mall from 09:00 a.m. until 07:00 p.m. (last bus from town). Distance to downtown: approximately a 10-minute drive (one way). We recommend arriving at least 10 minutes prior to the shuttle bus departure at the pickup locations. Shuttle bus schedule will be posted at the Shore Concierge Desk, Deck 5 and at the gangway.

TIPS FOR STAYING SAFE

Currently, pickpockets and muggers tend to prey on tourists. Your safety is our main concern. Please exercise care when going ashore with wallets, handbags, sunglasses and camera equipment. Avoid highly visible jewellery, handbags or expensive-looking watches, sunglasses or camera equipment. Do not use large denominations when paying street vendors as this may attract unwanted attention. Do not accept food or drinks from strangers. Avoid walking around the port area, unaccompanied, especially after dark. Use licensed taxis and keep to the main streets when unsure of your surroundings.

AGRICULTURAL NOTICE

Please note that it is strictly forbidden to carry ashore any food, fresh fruit, vegetables, wood products/handicrafts that include bark, seedlings of any kinds, animal or plant by-products or plants with soil. We thank you for your cooperation in this matter.

Overnight Stay

PLEASE NOTE THIS USEFUL INFORMATION WHEN GOING ASHORE.

SILVER DAWN SATELLITE PHONE NUMBER: +1 786 605 5750