

Chronicles

News and Information for all onboard events

SUNDAY, 30 MARCH 2025

EN ROUTE TO ARRECIFE, CANARY ISLANDS

DRESS CODE: ELEGANT CASUAL

For Ladies: may opt for trousers, blouses, skirts, or casual dresses.
For Gentlemen: can wear open-collar shirts and slacks. A jacket is optional. No jeans, shorts or flip flop type footwear after 6:00 P.M. in indoor venues.

TODAY'S WEATHER

Mostly sunny

High: 68°F 20°C

Low: 67°F 19°C



AT SEA

Aboard Silver Dawn

YOUR OPINION IS IMPORTANT TO US

At Silversea, we continually strive to enhance your journey with us. Your feedback is invaluable in helping us achieve this.

As your voyage is coming to an end, we are pleased to announce our new digital voyage questionnaire, powered by Medallia, which you can complete at home. After your voyage, all guests over the age of 18 who have provided us with their email address will receive an email invitation from SilverseaCruises@express. Medallia.com to participate in a brief online survey. We deeply appreciate your feedback and thank you for being an integral part of the Silversea experience.



CHAMPAGNE TASTING

BENEATH THE BUBBLES BY SOMMELIER TEAM

▶ 1 APRIL, 2:15 P.M.,
LA DAME, DECK 8

There will be a presentation and tasting of our selected onboard Champagnes, on 1 April. Your Sommelier Team will be your host for this special event. As space is limited, please sign up at the Reception Desk or with Sommelier Team to make your reservations by 10:00 p.m. on, 31 March. Should you wish to cancel your reservation for the Champagne tasting, please note that you must do so by the latest 1 April at 11:00 a.m., otherwise, the full Champagne tasting fee per person will be billed to your Guest Account. A minimum of 7 guests for the event to take place.

A fee per person applies.

The Champagnes we will be featuring are:

- Dom Pérignon Plénitude 2 2006
- Louis Roederer, Cristal 2015
- Krug, Grande Cuvée 169ème Édition
- Duval-Leroy Rosé Prestige NV
- Barons de Rothschild NV
- Laurent-Perrier Rosé NV



MICRONEEDLING

TIGHTEN AND LIFT SKIN

▶ THE OTIVM BEAUTY SPA
DECK 6

Microneedling elevates the overall texture of your skin on the face and neck. This treatment activates cellular regeneration producing collagen and elastin to help tighten and lift skin.

BEYOND THE ORIGINAL TONIGHT'S SHOW

▶ AT 9:30 PM
VENETIAN LOUNGE, DECK 5

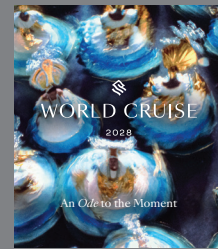
"Beyond the Original" redefines musical expression as male vocalists reinterpret iconic female songs, and female vocalists infuse legendary male anthems with newfound depth. This seamless blend of modern artistry, with a touch of operatic grandeur, is enriched by dramatic harmonies soaring over the masterful arrangements of the Silver Dawn Band, as they perfectly complement the evening's vocal performances. Featuring standout talents - Beatrice, Francesca, Luke and Sass - this show offers unforgettable renditions that bridge the worlds of classic, modern, and contemporary music. Experience a celebration of voice, harmony, and reinvention, where every note is reimagined and every performance transcends the boundaries of the original.



WORLD CRUISE 2028

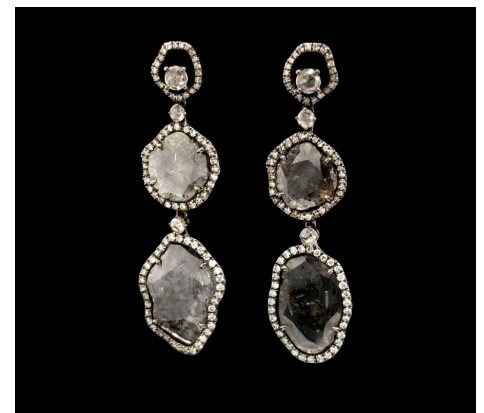
MIAMI TO NICE | 132 DAYS |
JANUARY 5 – MAY 16, 2028 |
SILVER SHADOW

In a world that spins ever faster, slowing down is revolutionary, and this immersive odyssey seeks to defy time in pursuit of timeless on a journey free from hurry. Where you can just be. Entranced by a place, lost in a landscape, and locked into the senses. We invite you to discover the joy of life in the moment as the intimate Silver Shadow navigates five continents at a pace that reveals the pulse of each region. Secure your preferred suite today and join us on a voyage that celebrates the poetry of presence. Book onboard and receive exclusive 5% onboard savings!



▶ For more information, please contact your Future Cruise Team Barrie and Lauren on Deck 5, or extension 60515.

HOW AND WHY TO CUT A DIAMOND?



▶ AT 11:00 AM
THE BOUTIQUE, DECK 8

From rare colours to colourless or faceted to rough, our fascination with the timeless diamond is never-ending. Join Hubert Jewellery & Gemstone Specialist **Jean** for an informative talk to learn more about this beautiful gemstone and the many forms it takes. All Hubert designs are tax and duty-free and exempt from US customs charges. Enquire in-store for details.

SUNDAY, 30 MARCH 2025

PASSPORT DISTRIBUTION FOR DISEMBARKING GUESTS

Passport distribution for disembarking Guests in Lisbon will take place today between 10:00 a.m. and 12:00 p.m. in the Dolce Vita, Deck 5.

MORNING ACTIVITIES

7:00	Fab Abs (sign up required)	Fitness Centre (6)
8:00	Pure Form Yoga (sign up required)	Fitness Centre (6)
9:00	Today's Silver Quiz, Crossword Puzzle and Sudoku are available (Return the Silver Quiz to Reception by 3:00 pm - prize points for the most accurate quiz that is returned earliest)	Arts Café (8)
9:00	Board games will be available for your enjoyment (unhosted)	Observation Lounge (11)
9:00	Shuffleboard will be set up for your enjoyment throughout the day (unhosted) * weather permitting	Outside Panorama Lounge (9)
9:00	Table Tennis will be available for your enjoyment (unhosted) * weather permitting	Outside Panorama Lounge (9)
9:00	Cornhole will be available to play (unhosted) * weather permitting	Outside Panorama Lounge (9)
9:30	Knit and Stitch Club: meet with fellow knitters and stitchers (unhosted, no material provided)	Observation Lounge (11)
9:30	S.A.L.T. Lab Class: "The Canary Islands: Culinary Gateway To The Americas" (please pre-register with guest services)	S.A.L.T. Lab (4)
9:45	Destination Lecture with Dr. Glenn E. Robinson - Ibn Battuta of Morocco: the World's Greatest Explorer: While Marco Polo is well known in the West for his early explorations of the known world, Morocco's Ibn Battuta was the most accomplished of all pre-modern explorers.	Venetian Lounge (5)
10:00	Live acupuncture demonstration with Dr. Liliana Grande	OTIVM Spa (6)
10:00	Bridge Beginners Lesson with your Bridge Instructor Susan	Silver Note (7)
10:30	Bye Bye Wrinkles: do not let fine lines hinder your stride. Our rejuvenating treatments can help you both look and feel your absolute best	OTIVM Spa (6)
10:45	Trivia Travel Quiz - Canary Islands Edition with your Entertainment Cruise Staff	Panorama Lounge (9)
10:45	Shuffleboard Tournament: Join your Entertainment Cruise Staff for this daytime activity * weather permitting	Outside Panorama Lounge (9)
11:00	Coffee Chat with your Entertainment Cruise Staff * weather permitting	Pool Deck (10)
11:00	Intermediate Bridge Lesson with your Bridge Instructor Susan	Silver Note (7)
11:00	Mahjong Open session (supervised) with fellow guest Reeva	S.A.L.T. Kitchen (4)
11:00	Detox for health & weight loss	OTIVM Spa (6)
11:00	Diamond Chat: Hubert Diamonds, our fascination with these beautiful gemstones is endless! Join Jean, our Guest Gemstone expert for an informative chat to learn more about diamonds, the many forms they take and how to value them.	Boutique (8)
11:15	Portuguese Class with your International Hostess Daniela	Panorama Lounge (9)
11:15	S.A.L.T. Culinary Talk & Demonstration: The Canary Islands: Culinary Gateway To The Americas Join S.A.L.T. Host Drake Robertson and S.A.L.T. Kitchen Chef Martin for a lively cooking demonstration with a wine pairing	Venetian Lounge (5)
11:30	Water Aerobics with members of the Entertainment Cruise Staff * weather permitting	Pool Deck (10)
11:30	Cornhole Tournament with some of the Silver Dawn Officers * weather permitting	Outside Panorama Lounge (9)
11:30	Mileage Pool: Join your Entertainment Cruise Staff to guess how many miles we have travelled since noon yesterday * weather permitting	Pool Deck (10)

AFTERNOON ACTIVITIES

12:00	Nautical and weather information announcement by Captain Ivo Botica	Bridge Camera Channel and Public Address System
12:00	German Corner - prepared by Executive Chef Ross and his team * weather permitting	Pool Grill (10)
1:30	Mahjong Beginner Session with fellow guest Reeva - Lesson 10	S.A.L.T. Kitchen (4)
1:45	Duplicate Bridge Play with your Bridge Instructor Susan	Silver Note (7)
2:00	S.A.L.T. Lab Class: "The Canary Islands: Culinary Gateway To The Americas" (please pre-register with guest services)	S.A.L.T. Lab (4)
2:00	Walk-in comfort with Goodfeet	Fitness Centre (6)
2:00	Dance Class: Join your Gentlemen Hosts Brian and Bill for this daytime activity	Panorama Lounge (9)
2:30	Arts Class with Shelley Ocana: African Style Earrings: The handmade, traditional beads from The Gambia make delightful earrings to match your African necklaces. Using painted wood and local clay beads, add a little sparkle with gold or silver colored spacers and create your own special keepsake earrings to remind you of West Africa.	S.A.L.T. Kitchen (4)
3:00	Enrichment Lecture with Lloyd Camp: ZULU! the rise of the Black Napoleon whose nation defeated a British army on the Day of the Dead Sun	Venetian Lounge (5)
3:00	Table Tennis Tournament: Join your Entertainment Cruise Staff for this daytime activity * weather permitting	Outside Panorama Lounge (9)
3:30	Anti-aging solutions	OTIVM Spa (6)
4:00	Acupuncture walk-in clinic with Dr. Liliana Grande (complimentary consultation)	OTIVM Spa (6)
4:00	Bingo! with a member of the Entertainment Cruise Staff	Panorama Lounge (9)
4:30	Blackjack Tournament with your friendly Casino Staff	Casino (7)
4:45	Team Trivia - Join Cruise Director Moss for this daytime activity	Dolce Vita (5)
5:00	Catholic Mass with Father Adam	Silver Note (7)
5:30	Golf Putting Competition: Join your Entertainment Cruise Staff for this daytime activity	Lobby (4)
5:30	Evening Stretch (sign up required)	Fitness Centre (6)

EVENING ACTIVITIES

DRESS CODE: ELEGANT CASUAL

6:00	Pianist Remon and Guitar Entertainer Felipe alternate performing for guests' listening pleasure	Dolce Vita (5)
6:15	Silver Dawn Band plays for your dancing and listening pleasure	Panorama Lounge (9)
6:30	Solo Travellers get together with your Gentlemen Hosts Brian and Bill	Panorama Lounge (9)
6:30	LGBTQ+ Get Together (unhosted)	Panorama Lounge (9)
7:30	Jazz Pianist André plays for guests' listening pleasure	Silver Note (7)
8:15	Join Silver Note Jazz Duo Esther and André as they entertain you with their live music	Silver Note (7)
9:00	Pianist Remon performs for guests' listening pleasure	Dolce Vita (5)
9:30	Showtime! Silversea Proudly Presents: "Beyond the Original" - reinterpreting iconic songs, infused with newfound depth Modern artistry with a touch of operatic grandeur, enriched by dramatic harmonies soaring over the masterful arrangements of the Silver Dawn Band	Venetian Lounge (5)
10:30	DJ Gabor invites you to a party to celebrate the songs you love (until late)	Panorama Lounge (9)



All Day Dining

BREAKFAST

ATLANTIDE (DECK 4)

À la Carte 8:00 a.m. – Last Seating 9:30 a.m.

LA TERRAZZA (DECK 7)

Buffet 7:30 a.m. – 10:00 a.m.

LUNCH

ATLANTIDE (DECK 4)

À la Carte 12:00 p.m. – Last Seating 1:30 p.m.

KAISEKI (DECK 4)

À la Carte 12:00 p.m. – Last Seating 2:30 p.m.

LA TERRAZZA (DECK 7)

Buffet 12:00 p.m. – 2:00 p.m.

THE GRILL (DECK 10) *

À la Carte 12:00 p.m. – Last Seating 3:30 p.m.

OPEN ALL DAY

ARTS CAFÉ (DECK 8)

Light Snacks 6:30 a.m. – 11:00 p.m.

SPACCANAPOLI (DECK 11)

À la Carte 11:00 a.m. – 11:00 p.m.

* Weather permitting

** Reservations required

IN-SUITE DINING

24-hour

The menu is available on the TV.

To place your order please contact your butler or call extension 500. In-Suite Dining is also available in other public areas when our dining venues are not open for service.

At Silversea Cruises, we take maximum food precautionary measures to ensure the safest quality product is offered to our guests; Worldwide Public Health Services advise that consuming raw or undercooked meats, seafood, shellfish, eggs, milk, or poultry may increase your risk of food-borne illness, especially if you have certain medical conditions.

DINNER

As a courtesy to your fellow guests please respect the times of your dinner reservation.

ATLANTIDE (DECK 4)

À la Carte 6:00 p.m. – Last Seating 8:30 p.m.

S.A.L.T. Kitchen (DECK 4)

À la Carte 6:30 p.m. – Last Seating 9:00 p.m.

KAISEKI (DECK 4) **

À la Carte 6:30 p.m. – Last Seating 9:00 p.m.

A dining fee per person applies

LA TERRAZZA (DECK 7) **

Spanish Family Style Dinner 7:00 p.m.

SILVER NOTE (DECK 7) **

À la Carte 7:30 p.m. – Last Seating 10:00 p.m.

THE GRILL (DECK 10) */**

À la Carte 6:30 p.m. – Last Seating 9:00 p.m.

LA DAME (DECK 8) **

À la Carte 6:30 p.m. – Last Seating 9:00 p.m.

Gentlemen: Jacket required

A dining fee per person applies

Should you wish to cancel your reservation at La Dame, please note that you must do so by latest 2:00pm on the day of the reservation, otherwise the full cover fee per person will be billed to your Guest Account.

BAR HOURS

9:00am – 10:30pm Pool Bar * [Deck 10]
 10:00am – until late Panorama Lounge [Deck 9]
 2:00pm – until late Dolce Vita [Deck 5]
 6:00pm – until late S.A.L.T. Bar [Deck 4]
 6:30am – until late Arts Café [Deck 8]
 6:00pm – 11:00pm Observation Library [Deck 11]
 7:00pm – until late Silver Note [Deck 7]
 9:00pm – until late Connoisseur's Corner [Deck 9]

*Weather permitting

SERVICES

OTIVM SPA | DECK 6

BEAUTY SALON AND BARBER SHOP

Dial 600 for appointments.

8:00 a.m. – 8:00 p.m.

Later appointments until 10:00 p.m. available on request.

SAUNA & STEAM ROOM | DECK 6

8:00 a.m. – 8:00 p.m.

FITNESS CENTRE | DECK 6

5:00 a.m. – 10:00 p.m.

Limited spaces available for classes.

Age restriction: over 18 to use the facilities. 16–18 allowed in with guardian.

FUTURE CRUISE SALES | DECK 5

Please dial 60515 or consult your suite ITV to request an appointment.

8:00 a.m. – 12:00 p.m. | 2:00 p.m. – 6:00 p.m.

BOUTIQUES | DECK 8

10:00 a.m. – 10:00 p.m.

Toiletries and other essential items are available for purchase upon request in the Boutique or through your Butler.

Dial 555 (Reception) for assistance.

CASINO | DECK 7

Slots: 10:00 a.m. – until late

Tables: 4:00 p.m. – 6:00 p.m.

9:00 p.m. – until late

Age restriction: over 18 to use the facilities.

SHORE CONCIERGE DESK | DECK 5

Dial 551 for assistance

during daily opening hours.

9:00 a.m. - 12:00 p.m. | 3:00 p.m. - 7:00 p.m.

GUEST RELATIONS MANAGER | DECK 5

Dial 60502 for assistance.

8:00 a.m. – 12:00 p.m. | 4:00 p.m. – 8:00 p.m.

MEDICAL CENTRE | DECK 3

Dial 10333 during clinic hours.

9:30 a.m. – 11:00 a.m. | 4:00 p.m. – 5:30 p.m.

Medical assistance is also available by appointment.

Dial 555 (Reception) after hours.

Emergency service is available 24 hours a day. Please use the Forward elevator or Forward stairs to reach the clinic.

Kindly ask about charges prior to consultation.

RESERVING DECK CHAIRS

Kindly note deck chairs cannot be reserved. When you leave your sun chair for long periods, please take your books, lotion or other items with you in order that other guests may use the deck chairs. Unattended items on the chairs will be removed by our personnel after approximately one hour and sent to reception (lost & found). Thank you for your cooperation in this matter. Guests who need assistance with deck chairs, may contact the pool bartender.

**IN THE EVENT OF AN
EMERGENCY PLEASE DIAL 999**