

Chronicles

News and Information for all onboard events

MONDAY, 31 MARCH 2025

ARRECIFE, CANARY ISLANDS

Arrival: 8:00 a.m.

All Aboard: 5:30 p.m.

Departure: 6:00 p.m.

DRESS CODE: ELEGANT CASUAL

Ladies: trousers, blouses, skirts, or casual dresses.

Gents: open-collar shirts and slacks, jacket optional.

No jeans, shorts or flip flop type footwear after 6:00 P.M.
in indoor venues.

TODAY'S WEATHER

Mostly sunny with possible rain

High: 68°F 20°C

Low: 62°F 17°C



ARRECIFE, CANARY ISLANDS

Aboard Silver Dawn

PLAN AHEAD

Upcoming ports



DATE	PORT	ARRIVE	DEPART
1 April	Day at Sea	-	-
2 April	Lisbon	2:00 p.m.	-

YOUR EXPERIENCES ASHORE

SHORE EXCURSION SUGGESTIONS

Enhance your voyage with our exceptional excursions. From day excursions or private arrangements, we offer you the world. Please visit the Shore Concierge Desk to discuss your options and reserve your excursions. If you prefer, you may request your excursions via MyCruise on you in-suite TV or by completing the Excursion Booking Form in your suite. Your butler will be pleased to deliver this if completed by our deadline.

LIS-F / Royal Palace of Queluz & Ericeira Village

4.50 Hours | \$99

Experience the Old World splendour of Lisbon and a taste of the Portuguese Riviera during this picturesque tour of the mountainous region of Sintra and the fishing port of Ericeira.

DECK 5 EXT. 551

OPENING HOURS:

7:30 A.M. - 10:30 A.M. | 4:00 P.M. - 7:00 P.M.



ARRECIFE, CANARY ISLANDS

Sun-kissed appeal of the Canary Islands

Nestled on the east coast of Lanzarote, Arrecife takes its name from the rocky reefs and outcrops that dominate its coastline. This pretty working city has a friendly, authentic feel, and has managed to remain true to its roots as a historic fishing village. There's a lot to explore, and whether you want to lie back on long swathes of opulent golden sand, or strap on hiking boots to crunch across Lanzarote's scorched volcanic scenery, this versatile capital has so much to offer. With castles, caves, sleepy beaches, and a glittering saltwater lagoon, Arrecife is the perfect place to get acquainted with the sun-kissed appeal of the Canary Islands.

Lanzarote's charcoal desert vistas radiate a remarkable luna-like quality, but dotted cacti, waving palms, and bursts of vibrant wildflowers add an accent of colour to the canvas. Arrecife itself boasts apricot-coloured beaches and labyrinthine lanes of white-wash buildings within its Old Quarter, where you can smell fresh fish grilling, and see locals dipping delicious local salty potatoes - papas arrugadas - into colourful sauces. An evening stroll along El Charco de San Gines is a must for watching fishing boats bobbing gently on the lagoon, and watching spectacular sunsets burning across the sky.

Standing tall for more than four centuries, Castillo De San Gabriel is located on the tiny island of Isote de los Ingleses, and was once a target for pirates, who would appear menacingly on the Atlantic's horizon. The stalwart 16th-century fortress now serves as the History Museum of Arrecife, and exhibitions inside explore the evolution of the city, and the ancient culture of Lanzarote. The International Museum of Contemporary Art, meanwhile, displays modern and abstract works within the 18th-century San José Castle's refined setting. See works from Cesar Manrique - the prominent artist and architect whose slick sixties style flair can be admired across the island.

SIGHTS

- Mirador Del Río Viewpoint
- Cueva de Los Verdes
- Jameos del Agua
- Large Caverns
- Timanfaya National Park
- Charco de Los Clicos
- Playa del Golfo
- Salinas del Janubio
- El Charco de San Ginés
- Castillo de San Gabriel
- Aquarium at Costa Teguise

SHOPPING AND CUISINE

Arrecife, the capital of Lanzarote, is the island's main shopping hub with a modern vibe. The Mall will be open 365 days a year, and features open air shopping with some major brands present, including a Zara store of 3,200 square metres, Cortefiel, Women's Secret, Springfield, Primor, Fund Grube, Worten, Sprinter and more.

Located in the old part of town, Calle Real is one of Arrecife's main shopping strips. It's lined with shops and restaurants, making it one of the most pleasant and complete areas for strolling and shopping in Lanzarote. Mojo picón: Mojo picón is the most famous sauce in the gastronomy of the Canary Islands.

CHAMPAGNE TASTING

BENEATH THE BUBBLES BY SOMMELIER TEAM

▶ 1 APRIL, 2:15 P.M.,
LA DAME, DECK 8

There will be a presentation and tasting of our selected onboard Champagnes, on 1 April. Your Sommelier Team will be your host for this special event. As space is limited, please sign up at the Reception Desk or with Sommelier Team to make your reservations by 10:00 p.m. on, 31 March. Should you wish to cancel your reservation for the Champagne tasting, please note that you must do so by the latest 1 April at 11:00 a.m., otherwise, the full Champagne tasting fee per person will be billed to your Guest Account. A minimum of 7 guests for the event to take place. **A fee per person applies.**



The Champagnes we will be featuring are:

- Dom Pérignon Plénitude 2 2006
- Louis Roederer, Cristal 2015
- Krug, Grande Cuvée 169ème Édition
- Duval-Leroy Rosé Prestige NV
- Barons de Rothschild NV
- Laurent-Perrier Rosé NV

THE ART OF GIFTING

BOUTIQUES AT SILVERSEA

▶ THE BOUTIQUE,
DECK 8

Our onboard Boutiques offer a lovely selection of jewellery, watches, fashions, perfumes and Silversea logo items, perfect as gifts for friends and loved ones (or for yourself!). Our sales professionals are eager to help you find the perfect gift for anyone.



Today is your last chance to make purchases in the Boutique. Remember that our prices are all tax free. Come and see us, we will be delighted to help you find the perfect memento of your travels.

ACUPUNCTURE

ALTERNATIVE THERAPY

▶ THE OTIVM BEAUTY SPA
DECK 6

The art of acupuncture has been around for more than 3,000 years. Enjoy the benefits of this ancient art in sessions that focus on balancing your body's needs and energising mind, body, and soul.

OTIVM

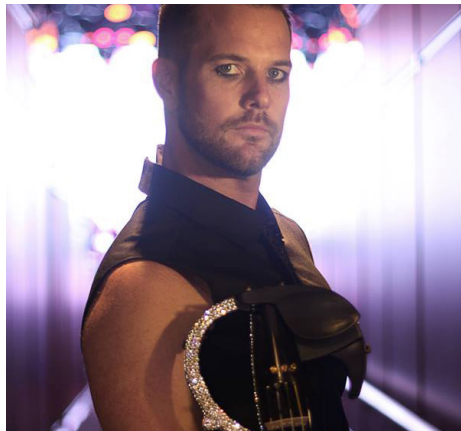
THE ORIGINAL ART
OF COMFORT

FIREWORKS ON FOUR STRINGS

SHOWTIME WITH CHRIS WATKINS

▶ AT: 6:15 PM
VENETIAN LOUNGE, DECK 5

Chris is not just a violinist, he is an explosive showman. His lighthearted humour and showmanship, electric violin, hand bedazzled with over 1000 Swarovski crystals, will take you on an unexpected journey transporting you to Lord of the Dance to seductive Argentinian tango, Coldplay; AC/DC's Thunderstruck concludes an eruptive musical montage played by an unmissable virtuoso soloist whose passion, zest and outstanding technical ability, originality, sparkle and command can never be replicated. He is one of a kind. This show is not to be missed.



EXPLORE OUR 2026 OCEAN VOYAGE DESTINATIONS

163 VOYAGES
152 DESTINATIONS
33 COUNTRIES

Look closer at the world and you'll see every place reveals more than you expected: a clandestine past locked up in arches of brick and stone; a traditional recipe passed down from generation to generation; a burst of bright yellow and orange fall colours in the middle of an emerald forest.

Nobody gets you closer to these epic secrets than Silversea, as we take you behind the scenes of every destination.

Book onboard and receive exclusive 5% onboard savings!



▶ For more information, please contact your Future Cruise Team Barrie and Lauren on Deck 5, or extension 60515.

YOUR GUEST MEAL IS OUR TREAT



Enhance your dining experience with our exclusive offer at La Dame and Kaiseki. Enjoy a memorable meal with your guest on us. Savor exceptional cuisine and impeccable service, making your evening truly special. **Take advantage of this 2-for-1 offer today for the 31st March and only for reservation on that day. A dining fee per person applies**

PHONE ETIQUETTE ONBOARD



As a courtesy to your fellow guests, we kindly ask you to refrain from using the speaker function on your cell phone in any public area or public venue onboard.



ALL DAY DINING

BREAKFAST

ATLANTIDE (DECK 4)

À la Carte 8:00 a.m. – Last Seating 9:30 a.m.

LA TERRAZZA (DECK 7)

Buffet 7:00 a.m. – 10:00 a.m.

LUNCH

ATLANTIDE (DECK 4)

À la Carte 12:00 p.m. – Last Seating 1:30 p.m.

KAISEKI (DECK 4)

À la Carte 12:00 p.m. – Last Seating 2:30 p.m.

LA TERRAZZA (DECK 7)

Buffet 12:00 p.m. – 2:00 p.m.

THE GRILL (DECK 10) *

À la Carte 12:00 p.m. – Last Seating 3:30 p.m.

OPEN ALL DAY

ARTS CAFÉ (DECK 8)

Light Snacks 6:30 a.m. – 11:00 p.m.

SPACCANAPOLI (DECK 11)

À la Carte 11:00 a.m. – 11:00 p.m.

* Weather permitting

** Reservations required

IN-SUITE DINING

24-hour

The menu is available on the TV.

To place your order please contact your butler or call extension 500. In-Suite Dining is also available in other public areas when our dining venues are not open for service.

At Silversea Cruises, we take maximum food precautionary measures to ensure the safest quality product is offered to our guests; Worldwide Public Health Services advise that consuming raw or undercooked meats, seafood, shellfish, eggs, milk, or poultry may increase your risk of food-borne illness, especially if you have certain medical conditions.

DINNER

As a courtesy to your fellow guests please respect the times of your dinner reservation.

ATLANTIDE (DECK 4)

À la Carte 6:00 p.m. – Last Seating 8:30 p.m.

S.A.L.T. Kitchen (DECK 4)

À la Carte 6:30 p.m. – Last Seating 9:00 p.m.

KAISEKI (DECK 4) **

À la Carte 6:30 p.m. – Last Seating 9:00 p.m.

A dining fee per person applies

LA TERRAZZA (DECK 7) **

À la Carte 6:30 p.m. – Last Seating 9:00 p.m.

SILVER NOTE (DECK 7) **

À la Carte 7:30 p.m. – Last Seating 10:00 p.m.

THE GRILL (DECK 10) */**

À la Carte 6:30 p.m. – Last Seating 9:00 p.m.

LA DAME (DECK 8) **

À la Carte 6:30 p.m. – Last Seating 9:00 p.m.

Gentlemen: Jacket required

A dining fee per person applies

Should you wish to cancel your reservation at La Dame, please note that you must do so by latest 2:00pm on the day of the reservation, otherwise the full cover fee per person will be billed to your Guest Account.

BAR HOURS

9:00am – 10:30pm

10:00am – until late

2:00pm – until late

6:00pm – until late

6:30am – until late

6:00pm – 11:00pm

7:00pm – until late

9:00pm – until late

Pool Bar * [Deck 10]

Panorama Lounge [Deck 9]

Dolce Vita [Deck 5]

S.A.L.T. Bar [Deck 4]

Arts Café [Deck 8]

Observation Library [Deck 11]

Silver Note [Deck 7]

Connoisseur's Corner [Deck 9]

*Weather permitting

SERVICES

OTIVM SPA | DECK 6

BEAUTY SALON AND BARBER SHOP

Dial 600 for appointments.

8:00 a.m. – 8:00 p.m.

Later appointments until 10:00 p.m.

available on request.

SAUNA & STEAM ROOM | DECK 6

8:00 a.m. – 8:00 p.m.

FITNESS CENTRE | DECK 6

5:00 a.m. – 10:00 p.m.

Limited spaces available for classes.

Age restriction: over 18 to use the

facilities. 16–18 allowed in with guardian.

FUTURE CRUISE SALES | DECK 5

Please dial 60515 or consult your suite ITV to request an appointment.

8:00 a.m. – 11:00 a.m. | 4:00 p.m. – 8:00 p.m.

BOUTIQUES | DECK 8

6:30 p.m. – 11:00 p.m.

Window gallery pop up boutique

open all day for preview and viewing.

CASINO | DECK 7

Slots: 8:00 p.m. – until late

Tables: 8:00 p.m. – until late

Age restriction: over 18 to use the facilities.

SHORE CONCIERGE DESK | DECK 5

Dial 551 for assistance during daily opening hours.

7:30 a.m. – 10:30 a.m. | 4:00 p.m. – 7:00 p.m.

GUEST RELATIONS MANAGER | DECK 5

Dial 60502 for assistance.

8:00 a.m. – 12:00 p.m. | 4:00 p.m. – 8:00 p.m.

MEDICAL CENTRE | DECK 3

Dial 10333 during clinic hours.

8:00 a.m. – 9:00 a.m. | 5:00 p.m. – 6:00 p.m.

Medical assistance is also available by appointment.

Dial 555 (Reception) after hours.

Emergency service is available 24 hours a day.

Please use the Forward elevator or Forward stairs to reach the clinic.

Kindly ask about charges prior to consultation.

VIEW YOUR EXPENSES

Kindly note that your on board expenses can be reviewed anytime on the interactive TV system in your suite. A printed copy of the final statement will be delivered to your suite on the morning of your disembarkation.

IN THE EVENT OF AN EMERGENCY PLEASE DIAL 999

Monday, 31 March 2025

Sunrise 7:45 a.m. • Sunset 8:11 p.m.

MORNING ACTIVITIES

8:00	Silver Dawn is scheduled to dock in Arrecife, Canary Islands, Spain Once the vessel has been cleared by local authorities, Cruise Director Moss will give weather and gangway location information (Clearance announcements are broadcast on the Bridge camera channel on your suite television)	
9:00	5 Minutes makeover	OTIVM Spa (6)
9:00	Today's Silver Quiz, Crossword Puzzle and Sudoku are available (Return the Silver Quiz to Reception by 3:00 pm - prize points for the most accurate quiz that is returned earliest)	Arts Café (8)
9:00	Board games will be available for your enjoyment (unhosted)	Observation Lounge (11)
9:00	Shuffleboard will be set up for your enjoyment throughout the day (unhosted) * weather permitting	Outside Panorama Lounge (9)
9:00	Cornhole will be available to play (unhosted) * weather permitting	Outside Panorama Lounge (9)
9:00	Table Tennis will be available for your enjoyment (unhosted) * weather permitting	Outside Panorama Lounge (9)
9:30	Knit and Stitch Club: meet with fellow knitters and stitchers (unhosted, no material provided)	Observation Lounge (11)
10:00	Instant wrinkle solutions with Dr. Marco	OTIVM Spa (6)
10:30	Arthritis & back pain solution with Dr. Liliana Grande	OTIVM Spa (6)
11:15	Shuffleboard Tournament: Join your Entertainment Cruise Staff for this daytime activity * weather permitting	Outside Panorama Lounge (9)

AFTERNOON ACTIVITIES

2:00	Improve your posture with Goodfeet (complimentary consultation)	Fitness Centre (6)
3:00	Table Tennis Tournament: Join your Entertainment Cruise Staff for this daytime activity * weather permitting	Outside Panorama Lounge (9)
4:00	Acupuncture walk-in clinic with Dr. Liliana Grande (complimentary consultation)	OTIVM Spa (6)
4:00	Bingo! with a member of the Entertainment Cruise Staff	Panorama Lounge (9)
4:00	Advance facial rejuvenation with skin specialist Dr. Marco	OTIVM Spa (6)
4:45	Team Trivia - Join Cruise Director Moss for this daytime activity	Dolce Vita (5)
5:00	Catholic Mass with Father Adam	Silver Note (7)
5:30	All Aboard! Silver Dawn prepares to sail	
5:30	Evening Stretch (sign up required)	Fitness Centre (6)
5:30	Golf Putting Competition: Join your Entertainment Cruise Staff for this daytime activity	Lobby (4)

EVENING ACTIVITIES

DRESS CODE: ELEGANT CASUAL

6:00	Silver Dawn sails for Lisbon, Portugal	
6:00	Pianist Remon performs for guests' listening pleasure	Dolce Vita (5)
6:15	Guitar Entertainer Felipe performs for guests' listening pleasure	Panorama Lounge (9)
6:15	Showtime! Silversea Proudly Presents: Headline Entertainer Chris Watkins: Fireworks On Four Strings Chris is not just a violinist, he is an explosive showman. He is one of a kind. This show is not to be missed.	Venetian Lounge (5)
6:30	Solo Travellers get together with your Gentlemen Hosts Brian and Bill	Panorama Lounge (9)
6:30	LGBTQ+ Get Together (unhosted)	Panorama Lounge (9)
7:00	Boutique Onboard Credit sale. Use it or lose it. You can't take your onboard credits with you. Check your limit today in the boutique. Join luxury experts to learn more. Save more this cruise	Boutique (8)
7:30	Jazz Pianist André plays for guests' listening pleasure	Silver Note (7)
8:15	Join Silver Note Jazz Duo Esther and André as they entertain you with their live music	Silver Note (7)
9:00	Pianist Remon and Guitar Entertainer Felipe alternate performing for guests' listening pleasure	Dolce Vita (5)
9:15	Liar's Club Game Show! Come join your Entertainment Team and their panel of liars A fun show about unusual words - guess who is telling the truth	Panorama Lounge (9)
10:15	DJ Gabor invites you to a party to celebrate the songs you love (until late)	Panorama Lounge (9)

SHIP PROCEDURES

Remember to carry your **Suite Key Card and a Digital Copy of your Passport** whenever going ashore as this is your only valid identification for reboarding the vessel.

PIER INFORMATION

Silver Dawn is docked in Arrecife, Canary Islands

Cruceros / Mármolos, Los Mármolos

IMPORTANT NOTICE

Silversea charges in United States Dollars for all shipboard transactions. We would like you to be aware that your credit card company may charge a foreign transaction fee. Silversea processes shipboard credit card transactions through the United Kingdom. Should you wish to register a different credit card to settle your account, please see our Reception Staff on Deck 5.

CURRENCY EXCHANGE

The local currency is Euros (EUR). Guests going ashore can expect the following rates of exchange:

1 USD = 0.91 EUR approx.

1 GBP = 1.18 EUR approx.

SHIP'S AGENT

(for use in emergencies only)

Noatum Maritime Spain, Teruel 27, 2º, Edificio
Hubara, Oficina J, 35500, Arrecife de Lanzarote
Phone: +34 629907606

Going ashore in Arrecife, Canary Islands, Spain

EXCURSIONS

The excursions depart at the times listed below from the pier ashore. As a courtesy to your fellow guests and to allow the punctual departure of your excursion, we ask all participants to proceed ashore **10 minutes** prior to your departure time. If you are late, unfortunately the transportation will not wait.

Please do not forget to bring your excursion tickets, Suite Key Card and a Digital Copy of your Passport.

ACE-K	LANZAROTE BY TWIZY ELECTRIC CAR	8:30 a.m.
ACE-F	THE GEOLOGICAL TRIFECTA	9:00 a.m.
ACE-Q	1ST DEP: LANZAROTE ISLAND HIGHLIGHTS	9:00 a.m.
ACE-E	1ST DEP: LANZAROTE THROUGH MANRIQUE'S EYES	9:15 a.m.
ACE-HA	1ST DEP: NATIONAL PARK OF TIMANFAYA & EXCLUSIVE VISIT TO SALINAS DEL JANUBIO	9:15 a.m.
ACE-LA	VOLCANIC WINELANDS & TASTING	9:30 a.m.
ACE-P	NATIONAL PARK OF TIMANFAYA & EXCLUSIVE VISIT TO DEL JANUBIO	9:30 a.m.
ACE-HB	2ND DEP: NATIONAL PARK OF TIMANFAYA & EXCLUSIVE VISIT TO SALINAS DEL JANUBIO	12:30 p.m.
ACE-EA	2ND DEP: LANZAROTE THROUGH MANRIQUE'S EYES	1:00 p.m.
ACE-QA	2ND DEP: LANZAROTE ISLAND HIGHLIGHTS	1:00 p.m.

HOSPITALITY DESK ON BOARD

There will be a local Hospitality Desk Representative on board upon arrival for 2 hours this morning at the Shore Concierge Desk (Deck 5). The representative will be able to answer detailed questions and to direct guests to their desired locations. Complimentary brochures and maps may also be available.

SHUTTLE BUS

A complimentary Shuttle Bus Service will be operating between the pier and El Monumente from 9:00 a.m. until 5:00 p.m. (last bus from town). Distance to downtown: approximately a 10 - minute drive (one way). We recommend arriving at least 10 minutes prior to the shuttle bus departure at the pickup locations. Shuttle bus schedule will be posted at the Shore Concierge Desk, Deck 5 and at the gangway.

GOING ASHORE INDEPENDENTLY

The Shore Concierge desk takes pride in its ability to help guests on tour as well as guests who prefer individual sightseeing. The team will make private arrangements and suggest itineraries for independent exploration. If you just want to grab a taxi or to walk ashore, the Shore Concierge is eager to supply local information and useful tips.

PLEASE NOTE THIS USEFUL INFORMATION WHEN GOING ASHORE.
SILVER DAWN SATELLITE PHONE NUMBER: +1 786 605 5750

All Aboard
5:30 p.m.