

# Chronicles

*News and Information for all onboard events*

**THURSDAY, 3 APRIL 2025**

LISBON, PORTUGAL

**All Aboard:** 4:30 p.m.

**Departure:** 5:00 p.m.

**DRESS CODE: ELEGANT CASUAL**

Ladies: trousers, blouses, skirts, or casual dresses.

Gents: open-collar shirts and slacks, jacket optional.

No jeans, shorts or flip flop type footwear after 6:00 P.M.  
in indoor venues.

**TODAY'S WEATHER**

*Cloudy with possible rain*

**High:** 62°F 17°C

**Low:** 54°F 12°C



**TIME CHANGE**



Please turn your clocks  
**ONE HOUR FORWARD**  
during the night  
between 3 and 4 April.

# LISBON, PORTUGAL

*Aboard Silver Dawn*

# PLAN AHEAD

## Upcoming ports



DATE	PORT	ARRIVE	DEPART
4 April	Day at Sea	-	-
5 April	Bilbao	9:00 a.m.	11:00 p.m.
6 April	Bordeaux	3:45 p.m.	-

## YOUR EXPERIENCES ASHORE

Welcome on board for your cruise from Mahé, Seychelles to Cape Town, South Africa. Important information in regards to your Shore Excursion Experience: all guests who pre-booked their excursion tickets will find them upon arrival into your Suite. To participate on any excursion, all guests must be in the possession of a valid excursion ticket. For your convenience on your excursion ticket you will find the following important information:

- Name of your excursion.
- Departure time of your excursion.
- Departure location of your excursion.
- Cancellation deadline of your excursion.

As courtesy to your fellow guests we kindly ask you to arrive 5 to 10 minutes prior to the designated departure point to allow for a punctual departure. Excursions will depart on time and guests who arrive late will unfortunately miss their tour without possibility for a refund. Please note the cancellation deadline of your excursion.

Tickets returned after this deadline are subject to 100% penalty. Thank you.

Your *Silver Dawn* Shore Concierge Team.

**DECK 5 EXT. 551**  
**OPENING HOURS:**  
**3:00 P.M. - 7:00 P.M.**



## LISBON, PORTUGAL

### *the capital and the largest city of Portugal*

Fado is a soulful and melancholic genre of music that has become an essential part of Lisbon's cultural heritage. It is a powerful expression of human emotions, reflecting themes of longing, loss, and the struggles of everyday life. The music is characterized by its mournful tones, accompanied by the traditional instruments of guitar and mandolin. Fado's origins can be traced back to the working-class neighborhoods of Lisbon in the early 19th century, where it was often performed in taverns and cafes.

Today, visitors to Lisbon can experience fado performances at numerous fado houses, cultural centers, and museums throughout the city. These intimate venues provide a deeply personal and emotional connection between the performers and the audience. Some of the most famous fado houses include Clube de Fado, A Baiuca, and Tasca do Chico, attracting visitors from around the world.

Fado is not only a symbol of the Portuguese identity but also reflects Lisbon's storied past. The music captures the hardships of life in the fado neighborhoods and the dictatorship that ruled Portugal for almost 50 years. Fado has become an important part of Lisbon's tourism industry, offering visitors a unique opportunity to experience the city's rich cultural heritage. Many fado houses offer dinner and show packages, providing an immersive and memorable experience for tourists.

### SIGHTS

- Castelo de S. Jorge
- Belém Tower
- Jerónimos Monastery
- Oceanário de Lisboa
- Mercado da Ribeira

### SHOPPING

The Avenida da Liberdade is the swankiest shopping street in Lisbon, lined with high-end shops and designer boutiques.

This tree-lined Boulevard is home to many of Portugal's most exclusive stores (Rolex, Louis Vuitton, Cartier) and the location of many fine restaurants and bars. The Avenida da Liberdade is also a characterful street to wander, with grand 19th-century architecture and shaded formal gardens.

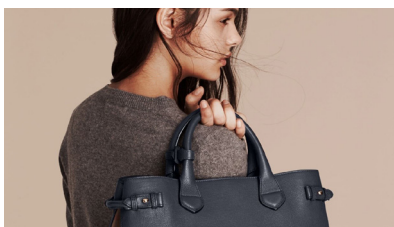
LxFactory is the urban and creative hub of Lisbon. Within this once abandoned industrial area, independent shops, stalls and cafes have taken to create an artisanal shopping experience.

# BOUTIQUES OF SILVERSEA

SHOP AT OUR ONBOARD BOUTIQUES

▶ THE BOUTIQUE, DECK 8

Welcome to the Silversea Boutiques. You are cordially invited to discover our new collection of luxury brands and well-appointed interiors. We offer outstanding fine Swiss watches and other brands like Certified Pre Owned Rolex and Tissot. We cannot wait to extend a warm welcome. Our team is waiting for you. Please refer to our daily Chronicles for the opening hours. Boutique's Service: Forgotten Essentials, if you have forgotten any essential items such as a Tooth brush or tooth paste you can purchase these from reception on Deck 5 or through your butler.



## INTERNET ACCESS TO MEET YOUR NEEDS

Complimentary unlimited Standard Internet access is offered to all guests.

Premium Wi-Fi with unlimited Internet access is available for purchase for those desiring an elevated online experience. This Premium Internet service provides enhanced features, ideally suited for voice and video calls, streaming, or downloading.

To upgrade to Premium Wi-Fi, simply go on GoSilversea.com. For assistance, please contact the Reception Desk.

	PREMIUM WI-FI	STANDARD WI-FI
BROWSE	✓	✓
MESSAGE	✓	✓
EMAIL	✓	✓
POST	✓	—
VOICE CALL	✓	—
VIDEO CHAT	✓	—
STREAM	✓	—

## DELUXE WINE SET

A TASTING ADVENTURE WELL BEYOND WORDS

Unleash your inner wine enthusiast and embark on a sensory journey like no other with our exclusive selection of three premium wines from our Connoisseurs Wine list. Let our Head Sommelier be your guide as you explore the nuances and flavors of these exceptional wines.

For more information on our Connoisseurs Wine Packages, reach out to our Head Sommelier.



## SPA & WIN RAFFLE PRIZES

ALTERNATIVE THERAPY

▶ THE OTIVM BEAUTY SPA, DECK 6

Win a spa "signature service" credit voucher. We have a total of \$500.00 worth of Spa Signature Service credit vouchers to give away. Enter our complimentary raffle for your chance to win one of these credit vouchers. Your entry must be submitted to the Spa Reception on the first day of the cruise. You must be present to win.

# OTIVM

THE ORIGINAL ART OF COMFORT

## EMOTIONS

A TASTE OF WHAT'S TO COME

▶ 9:15 P.M., VENETIAN LOUNGE, DECK 5

Join the Silversea Singers and Dancers for a taste of what's to come.

You will also meet some of the people that will keep you intrigued and entertained.



## EXPLORE OUR 2026 OCEAN VOYAGE DESTINATIONS

163 VOYAGES  
152 DESTINATIONS  
33 COUNTRIES

Look closer at the world and you'll see every place reveals more than you expected: a clandestine past locked up in arches of brick and stone; a traditional recipe passed down from generation to generation; a burst of bright yellow and orange fall colours in the middle of an emerald forest.

Nobody gets you closer to these epic secrets than Silversea, as we take you behind the scenes of every destination.

Book onboard and receive exclusive 5% onboard savings!



For more information, please contact your Future Cruise Team Barrie and Lauren on Deck 5, or extension 60515.

## DRESS CODE

SILVERSEA HAS AN ONBOARD DRESS CODE AFTER 6:00 P.M.



When, during the day, casual wear is suitable, akin to standard sports outfits found at five-star resorts, evening wear falls into two categories.

### ELEGANT CASUAL

Ladies: trousers, blouses, skirts, or casual dresses.  
Gents: open-collar shirts and slacks, jacket optional.

### FORMAL OPTIONAL

Ladies: evening gown or cocktail dress.  
Gents: tuxedo, dinner jacket, or dark suit with a tie.  
Guests can adhere to the Elegant Casual dress code, but men must wear a jacket in all indoor spaces.

### REGARDLESS OF THE DAILY DRESS CODE:

- After 6:00 p.m., indoor spaces prohibit jeans, shorts, sneakers, or flip flop-type footwear.
- Gentlemen dining at La Dame are required to wear a jacket.

## WI-FI CONNECTION



Experience seamless Wi-Fi connectivity during your voyage.

1. Select 'Silversea Guest Wi-Fi' from the networks.
2. Scan the QR to gosilversea.com.
3. Scroll down and Create Your Account
4. Press the green button START

Once connected, consider a Premium access upgrade to meet your voice or video calls or streaming needs.

**For assistance, please reach out to the Reception Desk.**



## ALL DAY DINING

### BREAKFAST

ATLANTIDE (DECK 4)

À la Carte 7:30 a.m. – Last Seating 9:00 a.m.

LA TERRAZZA (DECK 7)

Buffet 6:30 a.m. – 9:30 a.m.

### LUNCH

ATLANTIDE (DECK 4)

À la Carte 12:00 p.m. – Last Seating 1:30 p.m.

KAISEKI (DECK 4)

Closed

LA TERRAZZA (DECK 7)

Buffet 12:00 p.m. – 3:30 p.m.

THE GRILL (DECK 10) \*

À la Carte 12:00 p.m. – Last Seating 3:30 p.m.

### OPEN ALL DAY

ARTS CAFÉ (DECK 8)

Light Snacks 6:30 a.m. – 11:00 p.m.

SPACCANAPOLI (DECK 11)

À la Carte 11:00 a.m. – 11:00 p.m.

\* Weather permitting

\*\* Reservations required

### DINNER

*As a courtesy to your fellow guests please respect the times of your dinner reservation.*

ATLANTIDE (DECK 4)

À la Carte 6:00 p.m. – Last Seating 8:30 p.m.

S.A.L.T. Kitchen (DECK 4)

À la Carte 6:30 p.m. – Last Seating 9:00 p.m.

KAISEKI (DECK 4) \*\*

À la Carte 6:30 p.m. – Last Seating 9:00 p.m.

A dining fee per person applies

LA TERRAZZA (DECK 7) \*\*

À la Carte 6:30 p.m. – Last Seating 9:00 p.m.

SILVER NOTE (DECK 7) \*\*

À la Carte 7:30 p.m. – Last Seating 10:00 p.m.

THE GRILL (DECK 10) \*/\*\*

À la Carte 6:30 p.m. – Last Seating 9:00 p.m.

LA DAME (DECK 8) \*\*

À la Carte 6:30 p.m. – Last Seating 9:00 p.m.

Gentlemen: Jacket required

A dining fee per person applies

*Should you wish to cancel your reservation at La Dame, please note that you must do so by latest 2:00pm on the day of the reservation, otherwise the full cover fee per person will be billed to your Guest Account.*

### BAR HOURS

9:00am – 10:30pm Pool Bar \* [ Deck 10 ]

10:00am – until late Panorama Lounge [ Deck 9 ]

11:00pm – until late Dolce Vita [ Deck 5 ]

6:00pm – until late S.A.L.T. Bar [ Deck 4 ]

6:30am – until late Arts Café [ Deck 8 ]

6:00pm – 11:00pm Observation Library [ Deck 11 ]

7:00pm – until late Silver Note [ Deck 7 ]

9:00pm – until late Connoisseur's Corner [ Deck 9 ]

\*Weather permitting

### IN-SUITE DINING

24-hour

The menu is available on the TV.

To place your order please contact your butler or call extension 500. In-Suite Dining is also available in other public areas when our dining venues are not open for service.

*At Silversea Cruises, we take maximum food precautionary measures to ensure the safest quality product is offered to our guests; Worldwide Public Health Services advise that consuming raw or undercooked meats, seafood, shellfish, eggs, milk, or poultry may increase your risk of food-borne illness, especially if you have certain medical conditions.*

### ONBOARD SMOKING POLICY

Smoking of cigarette, e-cigarette and vaporizer is permitted in the Connoisseur's Corner (inside and outside); at designated tables and seating outside the Panorama Lounge (starboard side) and on the Pool Deck (port side).

Smoking of cigars and pipes is allowed only in the Connoisseur's Corner (inside and outside).

Smoking is not allowed: In guest suites and guest suite verandas/balconies and inside all public areas, lounges and bars.

## SERVICES

### OTIVM SPA | DECK 6

#### BEAUTY SALON AND BARBER SHOP

Dial 600 for appointments.

8:00 a.m. – 8:00 p.m.

Later appointments until 10:00 p.m. available on request.

### SAUNA & STEAM ROOM | DECK 6

8:00 a.m. – 8:00 p.m.

### FITNESS CENTRE | DECK 6

5:00 a.m. – 10:00 p.m.

Limited spaces available for classes.

Age restriction: over 18 to use the facilities. 16–18 allowed in with guardian.

### FUTURE CRUISE SALES | DECK 5

Please dial 60515 or consult your suite ITV to request an appointment.

7:30 a.m. – 10:00 a.m. | 5:00 p.m. – 7:00 p.m.

### BOUTIQUES | DECK 8

5:30 p.m. – 11:00 p.m.

Window gallery pop up boutique open all day for preview and viewing.

### CASINO | DECK 7

Slots: 7:00 p.m. – until late

Tables: 7:00 p.m. – until late

Age restriction: over 18 to use the facilities

### SHORE CONCIERGE DESK | DECK 5

Dial 551 for assistance during daily opening hours.

3:00 p.m. – 7:00 p.m.

### GUEST RELATIONS MANAGER | DECK 5

Dial 60502 for assistance.

8:00 a.m. – 12:00 p.m. | 4:00 p.m. – 8:00 p.m.

### MEDICAL CENTRE | DECK 3

Dial 10333 during clinic hours.

8:00 a.m. – 9:00 a.m. | 5:00 p.m. – 6:00 p.m.

Medical assistance is also available by appointment.

Dial 555 (Reception) after hours.

Emergency service is available 24 hours a day.

Please use the Forward elevator or Forward stairs to reach the clinic.

Kindly ask about charges prior to consultation.

**IN THE EVENT OF AN EMERGENCY PLEASE DIAL 999**

# Thursday, 3 April 2025

Sunrise 7:18 a.m. • Sunset 8:02 p.m.

## AFTERNOON ACTIVITIES

12:15	Pianist Remon performs for guests' listening pleasure	Dolce Vita (5)
2:00	<b>Guided Spa Tour:</b> Find the best treatment for you! Enjoy a guided tour of the spa and experience our free demo massage, complementary skin analysis or posture analysis (until 8:00p.m.)	OTIVM Spa (6)
3:00	Meet your onboard acupuncturist Dr. Liliana Grande and Medi Spa Physician Dr. Marco (until 8:00p.m.)	OTIVM Spa (6)
3:00	Meet your onboard fitness instructor Shiene Joslin (until 8:00p.m.)	Fitness Centre (6)
3:00	<b>Meet the S.A.L.T. Host Drake Robertson</b> (until 5:00 p.m.)	S.A.L.T. Lab (4)
4:30	<b>Silver Dawn prepares to sail</b>	
5:00	<b>Silver Dawn sails for Bilbao, Spain</b>	
5:00	<b>Sailaway Party:</b> the Silver Dawn Band plays for your listening pleasure * weather permitting	Pool Deck (10)
5:00	Catholic Mass with Father Adam	Silver Note (7)
5:30	For special dietary requirements, please see our Executive Chef	S.A.L.T. Kitchen (4)

## EVENING ACTIVITIES

## DRESS CODE: ELEGANT CASUAL

6:00	Hermes Birkin Special. The famous Birkin & Kelly Bag collection exclusive to Silver Dawn. This rare collection by appointment. This event has limited availability. Available for booking consultation	Boutique (8)
6:00	Guitar Entertainer Felipe and Pianist Remon alternate performing for guests' listening pleasure	Dolce Vita (5)
6:15	Silver Dawn Band plays for your dancing and listening pleasure	Panorama Lounge (9)
6:30	Solo Travelers Get Together with your Gentlemen Hosts Simon and Jeff	Panorama Lounge (9)
6:30	German Get Together with your International Hostess Daniela	Dolce Vita (5)
6:30	Boutique's Rolex watch preview & sign up booking. Reserve and book a limited Rolex time piece. Join Cromwell today to find out more. Rolex watches are available to purchase onboard. Limited availability, make a reservation today.	Boutique (8)
7:30	Jazz Pianist André plays for guests' listening pleasure	Silver Note (7)
8:15	Join Silver Note Jazz Duo Esther and André as they entertain you with their live music	Silver Note (7)
9:00	Pianist Remon and Guitar Entertainer Felipe alternate performing for guests' listening pleasure	Dolce Vita (5)
9:15	<b>Showtime!</b> Silversea Proudly Presents: <b>Emotions</b> Join your Entertainment Cruise Staff and the Silversea Singers and Dancers for a taste of what's to come. You will also meet some of the people that will keep you intrigued and entertained	Venetian Lounge (5)
10:15	DJ Gabor invites you to a party to celebrate the songs you love (until late)	Panorama Lounge (9)

## Evening Dress Code

\*Some of the below mentioned dress codes may be subject to change due to operational reasons.

3 April – Lisbon .....	Elegant Casual
4 April – Day at sea .....	Formal Optional
5 April – Bilbao .....	Elegant Casual
6 April – Bordeaux .....	Elegant Casual
7 April – Bordeaux .....	Elegant Casual

8 April – Bordeaux .....	Elegant Casual
9 April – Day at sea .....	Formal Optional
10 April – Saint Malo .....	Elegant Casual
11 April – St Peter Port, Guernesey .....	Elegant Casual
12 April – Southampton .....	Elegant Casual

## SHIP PROCEDURES

Remember to carry your **Suite Key Card** whenever going ashore as this is your only valid identification for reboarding the vessel.

## PIER INFORMATION

*Silver Dawn* is docked in Santa Apolónia Cruise Terminal.

## IMPORTANT NOTICE

Silversea charges in United States Dollars for all shipboard transactions. We would like you to be aware that your credit card company may charge a foreign transaction fee. Silversea processes shipboard credit card transactions through the United Kingdom. Should you wish to register a different credit card to settle your account, please see our Reception Staff on Deck 5.

## CURRENCY EXCHANGE

The local currency is Euros (EUR). Guests going ashore can expect the following rates of exchange:

**1 USD = 0.92 EUR approx.**

**1 GBP = 1.19 EUR approx.**

## SHIP'S AGENT

Arenthem

Edifício Lisboa Oriente

Av. Infante D. Henrique 333,

Ed. 4, Piso 5, Esc. 62, 1800-297 Lisboa

Phone: +351 93 289 2908

Email: operationslisbon@incargo.pt

# Going ashore in Lisbon, *Portugal*

## EXCURSIONS - IN-TRANSIT

The excursions depart at the times listed below from the pier ashore. As a courtesy to your fellow guests and to allow the punctual departure of your excursion, we ask all participants to proceed ashore **10 minutes** prior to your departure time. If you are late, unfortunately the transportation will not wait.

**Please do not forget to bring your excursion tickets and Suite Key Card.**

LIS-B	ROMANTIC SINTRA & PORTUGUESE RIVIERA.....	8:45 a.m.
LIS-C	PANORAMIC LISBON & TAGUS RIVER CRUISE .....	9:00 a.m.
LIS-H	LISBON AND UNESCO JERÓNIMOS MONASTERY .....	9:00 a.m.
LIS-G	BAROQUE LISBON & THE ART OF THE TILES .....	9:15 a.m.

## HOSPITALITY DESK ON BOARD

There will be a local Hospitality Desk Representative on board for 2 hours from 9:00 a.m. - 11:00 a.m. this morning at the Shore Concierge Desk (Deck 5). The representative will be able to answer detailed questions and to direct guests to their desired locations. Complimentary brochures and maps may also be available.

## PORTUGUESE INTERNATIONAL VAT

During our stay in Portuguese waters only (Lisbon), Portuguese Value Added Tax will be applied to food and beverage items sold onboard.

Following Tax rate will apply:

- Food and Alcoholic beverages 23%
- Specialty restaurants 13%

## GOING ASHORE INDEPENDENTLY

The Shore Concierge desk takes pride in its ability to help guests on tour as well as guests who prefer individual sightseeing. The team will make private arrangements and suggest itineraries for independent exploration. If you just want to grab a taxi or to walk ashore, the Shore Concierge is eager to supply local information and useful tips.

## EXCURSIONS

Port information and full tour descriptions are available on the interactive TV system in your suite for each port of call for this cruise.

*All Aboard*  
*4:30 p.m.*

**PLEASE NOTE THIS USEFUL INFORMATION WHEN GOING ASHORE.**  
**SILVER DAWN SATELLITE PHONE NUMBER: +1 786 605 5750**